

For Research Use Only

CAP2 Monoclonal antibody, PBS Only



Catalog Number: 67412-1-PBS

Basic Information

Catalog Number: 67412-1-PBS	GenBank Accession Number: BC008481	Purification Method: Protein A purification
Size: 100ug , Concentration: 1 mg/ml by Nanodrop;	GeneID (NCBI): 10486	CloneNo.: 1G7D2
Source: Mouse	UNIPROT ID: P40123	
Isotype: IgG2a	Full Name: CAP, adenylate cyclase-associated protein, 2 (yeast)	
Immunogen Catalog Number: AG8622	Calculated MW: 477 aa, 53 kDa	
	Observed MW: 51-53 kDa	

Applications

Tested Applications:
WB, Indirect ELISA

Species Specificity:
Human

Background Information

CAPs (CAP1 and CAP2) are evolutionarily conserved proteins with roles in regulating the actin cytoskeleton and in signal transduction. CAP2 is predominantly expressed in brain, heart and skeletal muscle, and skin. It is found in the nucleus in undifferentiated myoblasts and at the M-Line of differentiated myotubes. Overexpression of CAP2 has been reported in many cancers, including hepatocellular carcinoma (HCC), human breast cancer, and malignant melanoma.

Storage

Storage:
Store at -80°C.

Storage Buffer:
PBS Only

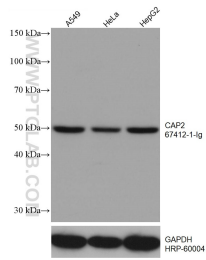
For technical support and original validation data for this product please contact:

T: 1 (888) 4PTGLAB (1-888-478-4522) (toll free in USA), or 1(312) 455-8498 (outside USA)

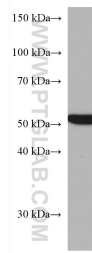
E: proteintech@ptglab.com
W: ptglab.com

This product is exclusively available under Proteintech Group brand and is not available to purchase from any other manufacturer.

Selected Validation Data



Various lysates were subjected to SDS PAGE followed by western blot with 67412-1-Ig (CAP2 antibody) at dilution of 1:5000 incubated at room temperature for 1.5 hours. The membrane was stripped and reblotted with HRP-conjugated GAPDH Monoclonal antibody (HRP-60004) as loading control. This data was developed using the same antibody clone with 67412-1-PBS in a different storage buffer formulation.



HepG2 cells were subjected to SDS PAGE followed by western blot with 67412-1-Ig (CAP2 antibody) at dilution of 1:3000 incubated at room temperature for 1.5 hours. This data was developed using the same antibody clone with 67412-1-PBS in a different storage buffer formulation.