

For Research Use Only

# MAT1A Monoclonal antibody, PBS Only



Catalog Number: 67408-1-PBS

## Basic Information

<b>Catalog Number:</b> 67408-1-PBS	<b>GenBank Accession Number:</b> BC018359	<b>Purification Method:</b> Protein A purification
<b>Size:</b> 100ug, Concentration: 1 mg/ml by Nanodrop;	<b>GeneID (NCBI):</b> 4143	<b>CloneNo.:</b> 2F1C1
<b>Source:</b> Mouse	<b>UNIPROT ID:</b> Q00266	
<b>Isotype:</b> IgG2a	<b>Full Name:</b> methionine adenosyltransferase I, alpha	
<b>Immunogen Catalog Number:</b> AG3076	<b>Calculated MW:</b> 395 aa, 44 kDa	
	<b>Observed MW:</b> 49 kDa	

## Applications

**Tested Applications:**  
WB, IF, ELISA

**Species Specificity:**  
Human, mouse, rat

## Background Information

Methionine adenosyltransferase (MAT) is the enzyme that catalyzes the synthesis of S-adenosylmethionine (AdoMet), the main donor of methyl groups in the cell. In mammals MAT is encoded by two different genes, MAT1A and MAT2A. MAT1A is expressed only in the mature liver whereas fetal hepatocytes, extrahepatic tissues and liver cancer cells express MAT2A.

## Storage

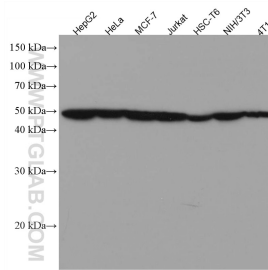
**Storage:**  
Store at -80°C.

**Storage Buffer:**  
PBS only

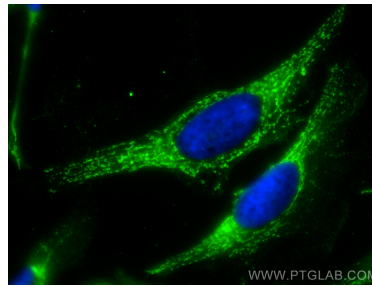
For technical support and original validation data for this product please contact:  
T: 1 (888) 4PTGLAB (1-888-478-4522) (toll free in USA), or 1(312) 455-8498 (outside USA)      E: [proteintech@ptglab.com](mailto:proteintech@ptglab.com)  
W: [ptglab.com](http://ptglab.com)

This product is exclusively available under Proteintech Group brand and is not available to purchase from any other manufacturer.

## Selected Validation Data



Various lysates were subjected to SDS PAGE followed by western blot with 67408-1-Ig (MAT1A antibody) at dilution of 1:3000 incubated at room temperature for 1.5 hours. This data was developed using the same antibody clone with 67408-1-PBS in a different storage buffer formulation.



Immunofluorescent analysis of (-20°C Methanol) fixed HeLa cells using MAT1A antibody (67408-1-Ig, Clone: 2F1C1) at dilution of 1:800 and CoraLite®488-Conjugated AffiniPure Goat Anti-Mouse IgG(H+L). This data was developed using the same antibody clone with 67408-1-PBS in a different storage buffer formulation.