

For Research Use Only

# Secretogranin V Monoclonal antibody

Catalog Number:67406-1-Ig



## Basic Information

<b>Catalog Number:</b> 67406-1-Ig	<b>GenBank Accession Number:</b> BC005349	<b>Purification Method:</b> Protein G purification
<b>Size:</b> 150ul , Concentration: 2300 ug/ml by Nanodrop and 927 ug/ml by Bradford method using BSA as the standard;	<b>GeneID (NCBI):</b> 6447	<b>CloneNo.:</b> 1B9H6
<b>Source:</b> Mouse	<b>UNIPROT ID:</b> P05408	<b>Recommended Dilutions:</b> IHC 1:2000-1:8000
<b>Isotype:</b> IgG1	<b>Full Name:</b> secretogranin V (7B2 protein)	
<b>Immunogen Catalog Number:</b> AG28607	<b>Calculated MW:</b> 24 kDa	

## Applications

<b>Tested Applications:</b> IHC, ELISA	<b>Positive Controls:</b> IHC : human pituitary adenoma tissue,
<b>Species Specificity:</b> Human	
<b>Note-IHC: suggested antigen retrieval with TE buffer pH 9.0; (*) Alternatively, antigen retrieval may be performed with citrate buffer pH 6.0</b>	

## Storage

<b>Storage:</b> Store at -20°C.
<b>Storage Buffer:</b> PBS with 0.02% sodium azide and 50% glycerol pH 7.3.
Aliquoting is unnecessary for -20°C storage

\*\*\* 20ul sizes contain 0.1% BSA

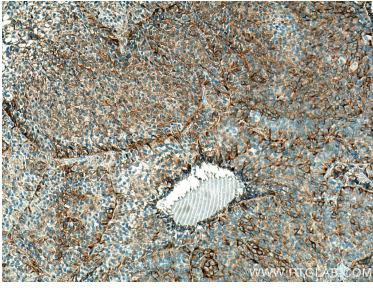
For technical support and original validation data for this product please contact:

T: 1 (888) 4PTGLAB (1-888-478-4522) (toll free in USA), or 1(312) 455-8498 (outside USA)

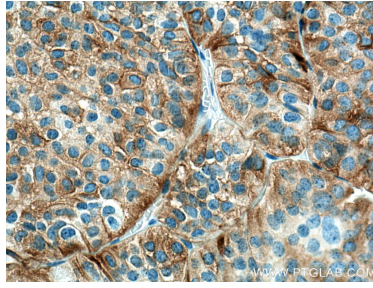
E: proteintech@ptglab.com  
W: ptglab.com

This product is exclusively available under Proteintech Group brand and is not available to purchase from any other manufacturer.

## Selected Validation Data



Immunohistochemical analysis of paraffin-embedded human pituitary adenoma tissue slide using 67406-1-Ig (Secretogranin V antibody) at dilution of 1:4000 (under 10x lens). Heat mediated antigen retrieval with Tris-EDTA buffer (pH 9.0).



Immunohistochemical analysis of paraffin-embedded human pituitary adenoma tissue slide using 67406-1-Ig (Secretogranin V antibody) at dilution of 1:4000 (under 40x lens). Heat mediated antigen retrieval with Tris-EDTA buffer (pH 9.0).