

For Research Use Only

Caspase 4 Monoclonal antibody, PBS Only

Catalog Number: 67398-1-PBS



Basic Information

Catalog Number:

67398-1-PBS

Size:

100ug, Concentration: 1mg/ml by Nanodrop;

Source:

Mouse

Isotype:

IgG1

Immunogen Catalog Number:

AG29488

GenBank Accession Number:

BC017839

GeneID (NCBI):

837

UNIPROT ID:

P49662

Full Name:

caspase 4, apoptosis-related cysteine peptidase

Calculated MW:

377 aa, 43 kDa

Observed MW:

43-48 kDa

Purification Method:

Protein A purification

CloneNo.:

1D1E12

Applications

Tested Applications:

WB, IHC, IF/ICC, Indirect ELISA

Species Specificity:

human

Background Information

Caspase 4 (CASP4), is a member of the cysteine-aspartic acid protease (caspase) family. Sequential activation of caspases plays a central role in the execution-phase of cell apoptosis. Caspase 4 is able to cleave and activate its own precursor protein, as well as caspase 1 precursor. Overexpression of caspase 4 will induce cell apoptosis.

Storage

Storage:

Store at -80°C.

Storage Buffer:

PBS Only

For technical support and original validation data for this product please contact:

T: 1 (888) 4PTGLAB (1-888-478-4522) (toll free in USA), or 1(312) 455-8498 (outside USA)

E: proteintech@ptglab.com

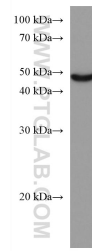
W: ptglab.com

This product is exclusively available under Proteintech Group brand and is not available to purchase from any other manufacturer.

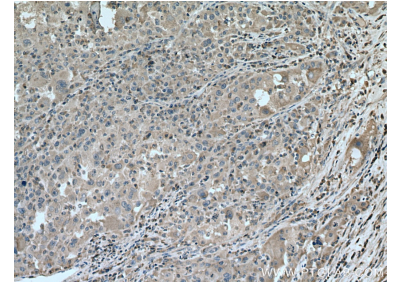
Selected Validation Data



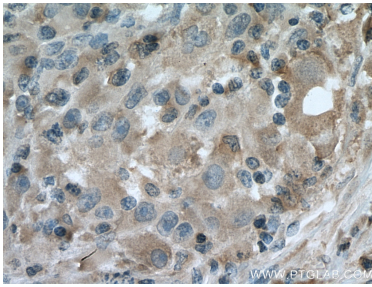
SGC-7901 cells were subjected to SDS PAGE followed by western blot with 67398-1-Ig (Caspase 4 antibody) at dilution of 1:5000 incubated at room temperature for 1.5 hours. This data was developed using the same antibody clone with 67398-1-PBS in a different storage buffer formulation.



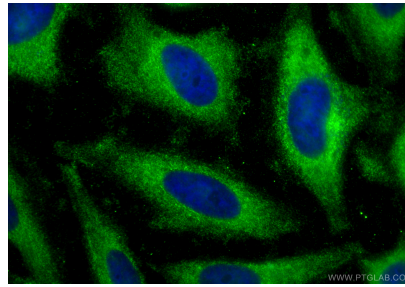
HL-60 cells were subjected to SDS PAGE followed by western blot with 67398-1-Ig (Caspase 4 antibody) at dilution of 1:5000 incubated at room temperature for 1.5 hours. This data was developed using the same antibody clone with 67398-1-PBS in a different storage buffer formulation.



Immunohistochemical analysis of paraffin-embedded human liver cancer tissue slide using 67398-1-Ig (Caspase 4 antibody) at dilution of 1:500 (under 10x lens). Heat mediated antigen retrieval with Tris-EDTA buffer (pH 9.0). This data was developed using the same antibody clone with 67398-1-PBS in a different storage buffer formulation.



Immunohistochemical analysis of paraffin-embedded human liver cancer tissue slide using 67398-1-Ig (Caspase 4 antibody) at dilution of 1:500 (under 40x lens). Heat mediated antigen retrieval with Tris-EDTA buffer (pH 9.0). This data was developed using the same antibody clone with 67398-1-PBS in a different storage buffer formulation.



Immunofluorescent analysis of (-20°C Ethanol) fixed HeLa cells using Caspase 4 antibody (67398-1-Ig, Clone: 1D1E12) at dilution of 1:800 and Coralite® 488-Conjugated Goat Anti-Mouse IgG(H+L) (SA00013-1). This data was developed using the same antibody clone with 67398-1-PBS in a different storage buffer formulation.