

For Research Use Only

# FGL1 Monoclonal antibody, PBS Only



Catalog Number: 67391-1-PBS

## Basic Information

<b>Catalog Number:</b> 67391-1-PBS	<b>GenBank Accession Number:</b> BC007047	<b>Purification Method:</b> Protein G purification
<b>Size:</b> 100ug , Concentration: 1 mg/ml by Nanodrop;	<b>GeneID (NCBI):</b> 2267	<b>CloneNo.:</b> 2B11C6
<b>Source:</b> Mouse	<b>UNIPROT ID:</b> Q08830	
<b>Isotype:</b> IgG1	<b>Full Name:</b> fibrinogen-like 1	
<b>Immunogen Catalog Number:</b> AG8581	<b>Calculated MW:</b> 312 aa, 36 kDa	
	<b>Observed MW:</b> 36 kDa	

## Applications

**Tested Applications:**  
WB, IF, IHC, Indirect ELISA

**Species Specificity:**  
Human, pig

## Background Information

Fibrinogen-like 1 (FGL1), also termed hepatocyte-derived fibrinogen-related protein 1 (HFREP1) or hepassocin, is a predominantly liver expressed protein that has been implicated as both a hepatoprotectant and a hepatocyte mitogen. FGL1 expression is decreased in hepatocellular carcinoma (HCC), and it may play a role in the development of hepatocellular carcinomas.

## Storage

**Storage:**  
Store at -80°C.

**Storage Buffer:**  
PBS Only

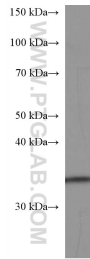
For technical support and original validation data for this product please contact:

T: 1 (888) 4PTGLAB (1-888-478-4522) (toll free  
in USA), or 1(312) 455-8498 (outside USA)

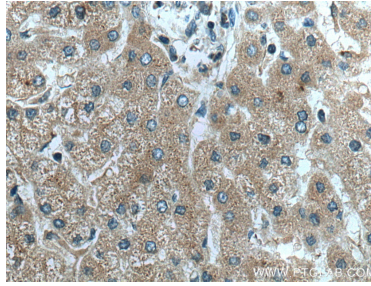
E: [proteintech@ptglab.com](mailto:proteintech@ptglab.com)  
W: [ptglab.com](http://ptglab.com)

**This product is exclusively available under Proteintech Group brand and is not available to purchase from any other manufacturer.**

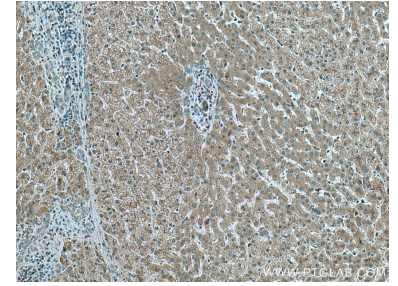
## Selected Validation Data



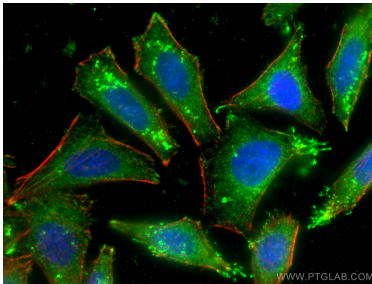
pig liver tissue were subjected to SDS PAGE followed by western blot with 67391-1-Ig (FGL1 antibody) at dilution of 1:2700 incubated at room temperature for 1.5 hours. This data was developed using the same antibody clone with 67391-1-PBS in a different storage buffer formulation.



Immunohistochemical analysis of paraffin-embedded human liver tissue slide using 67391-1-Ig (FGL1 antibody) at dilution of 1:1000 (under 40x lens). Heat mediated antigen retrieval with Tris-EDTA buffer (pH 9.0). This data was developed using the same antibody clone with 67391-1-PBS in a different storage buffer formulation.



Immunohistochemical analysis of paraffin-embedded human liver tissue slide using 67391-1-Ig (FGL1 antibody) at dilution of 1:1000 (under 10x lens). Heat mediated antigen retrieval with Tris-EDTA buffer (pH 9.0). This data was developed using the same antibody clone with 67391-1-PBS in a different storage buffer formulation.



Immunofluorescent analysis of (-20°C Ethanol) fixed HepG2 cells using FGL1 antibody (67391-1-Ig, Clone: 2B11C6) at dilution of 1:400 and CoraLite®488-Conjugated AffiniPure Goat Anti-Mouse IgG(H+L), CL594-Phalloidin (red). This data was developed using the same antibody clone with 67391-1-PBS in a different storage buffer formulation.