

For Research Use Only

SEC11A Monoclonal antibody, PBS Only (Capture)

Catalog Number: 67379-2-PBS



Basic Information

Catalog Number: 67379-2-PBS	GenBank Accession Number: BC000359	Purification Method: Protein G Magarose purification
Size: 100ug , Concentration: 1 mg/ml by Nanodrop;	GeneID (NCBI): 23478	CloneNo.: 1C3D2
Source: Mouse	UNIPROT ID: P67812	
Isotype: IgG1	Full Name: SEC11 homolog A (S. cerevisiae)	
Immunogen Catalog Number: AG6610	Calculated MW: 21 kDa	

Applications

Tested Applications:
Cytometric bead array, Indirect ELISA

Species Specificity:
human

Product Information

67379-2-PBS targets SEC11A as part of a matched antibody pair:

MP50880-1: 67379-2-PBS capture and 67379-3-PBS detection (validated in Cytometric bead array)

MP50880-2: 67379-2-PBS capture and 67379-4-PBS detection (validated in Cytometric bead array)

Unconjugated mouse monoclonal antibody pair in PBS only (BSA and azide free) storage buffer at a concentration of 1 mg/mL, ready for conjugation.

This conjugation ready format makes antibodies ideal for use in many applications including: ELISAs, multiplex assays requiring matched pairs, mass cytometry, and multiplex imaging applications. Antibody use should be optimized by the end user for each application and assay.

Storage

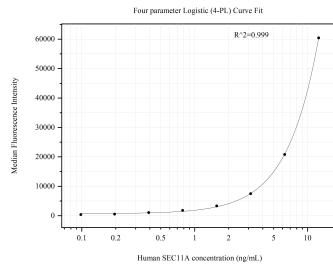
Storage:
Store at -80°C.

Storage Buffer:
PBS Only

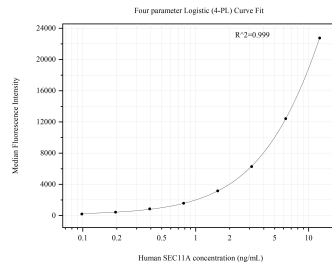
For technical support and original validation data for this product please contact:
T: 1 (888) 4PTGLAB (1-888-478-4522) (toll free in USA), or 1(312) 455-8498 (outside USA) E: proteintech@ptglab.com
W: ptglab.com

This product is exclusively available under Proteintech Group brand and is not available to purchase from any other manufacturer.

Selected Validation Data



Cytometric bead array standard curve of MP50880-1, SEC11A Monoclonal Matched Antibody Pair, PBS Only. Capture antibody: 67379-2-PBS. Detection antibody: 67379-3-PBS. Standard:Ag6610. Range: 0.098-12.5 ng/mL



Cytometric bead array standard curve of MP50880-2, SEC11A Monoclonal Matched Antibody Pair, PBS Only. Capture antibody: 67379-2-PBS. Detection antibody: 67379-4-PBS. Standard:Ag6610. Range: 0.098-12.5 ng/mL