

For Research Use Only

NHE1 Monoclonal antibody, PBS Only



Catalog Number: 67363-1-PBS

Featured Product

Basic Information

Catalog Number:

67363-1-PBS

Size:

100ug , Concentration: 1 mg/ml by Nanodrop;

Source:

Mouse

Isotype:

IgG1

Immunogen Catalog Number:

AG14329

GenBank Accession Number:

BC012121

GeneID (NCBI):

6548

UNIPROT ID:

P19634

Full Name:

solute carrier family 9 (sodium/hydrogen exchanger), member 1

Calculated MW:

815 aa, 91 kDa

Observed MW:

110 kDa

Purification Method:

Protein G purification

CloneNo.:

3D9F3

Applications

Tested Applications:

WB, IHC, Indirect ELISA

Species Specificity:

Human, Rat

Background Information

NHE1, also named as SLC9A1, is involved in pH regulation that can eliminate acids generated by active metabolism and counter adverse environmental conditions. NHE1 plays an important role in signal transduction. It has been shown that NHE1 participates in the development and progression of human breast cancer, gastric cancer and others. NHE1 has some isoforms with 91 kDa , 110 kDa (phosphoglycoprotein) and 210 kDa (dimeric protein). (PMID:28098891, 27751915, 8300588)

Storage

Storage:

Store at -80°C.

Storage Buffer:

PBS Only

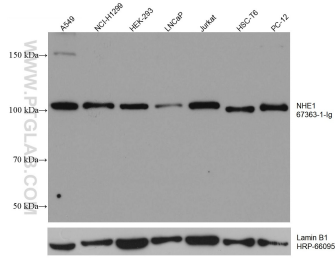
For technical support and original validation data for this product please contact:

T: 1 (888) 4PTGLAB (1-888-478-4522) (toll free in USA), or 1(312) 455-8498 (outside USA)

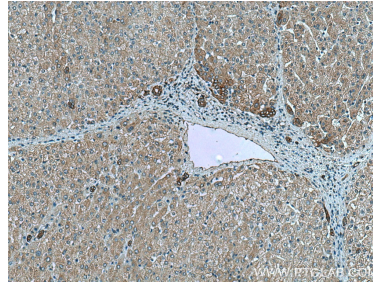
E: proteintech@ptglab.com
W: ptglab.com

This product is exclusively available under Proteintech Group brand and is not available to purchase from any other manufacturer.

Selected Validation Data



Various lysates were subjected to SDS PAGE followed by western blot with 67363-1-Ig (NHE1 antibody) at dilution of 1:20000 incubated at room temperature for 1.5 hours. The membrane was stripped and reblotted with HRP-conjugated Lamin B1 Monoclonal antibody (HRP-66095) as loading control. This data was developed using the same antibody clone with 67363-1-PBS in a different storage buffer formulation.



Immunohistochemical analysis of paraffin-embedded human liver tissue slide using 67363-1-Ig (NHE1 antibody) at dilution of 1:1000 (under 10x lens). Heat mediated antigen retrieval with Tris-EDTA buffer (pH 9.0). This data was developed using the same antibody clone with 67363-1-PBS in a different storage buffer formulation.