

For Research Use Only

RALBP1 Monoclonal antibody, PBS Only

Catalog Number: 67359-1-PBS



Basic Information

Catalog Number:

67359-1-PBS

Size:

100ug , Concentration: 1mg/ml by Nanodrop;

Source:

Mouse

Isotype:

IgG1

Immunogen Catalog Number:

AG28618

GenBank Accession Number:

BC013126

GeneID (NCBI):

10928

UNIPROT ID:

Q15311

Full Name:

ralA binding protein 1

Calculated MW:

655 aa, 76 kDa

Observed MW:

95 kDa

Purification Method:

Protein G purification

CloneNo.:

1B2F5

Applications

Tested Applications:

WB, FC (Intra), Indirect ELISA

Species Specificity:

human, mouse

Storage

Storage:

Store at -80°C.

Storage Buffer:

PBS Only

For technical support and original validation data for this product please contact:

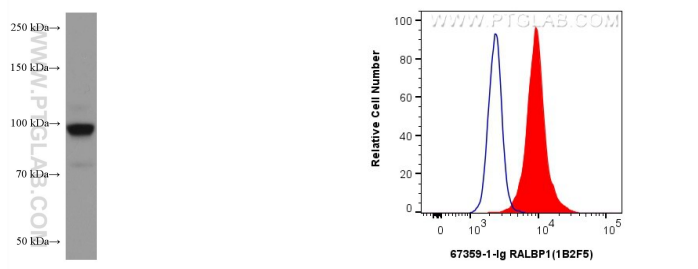
T: 1 (888) 4PTGLAB (1-888-478-4522) (toll free in USA), or 1(312) 455-8498 (outside USA)

E: proteintech@ptglab.com

W: ptglab.com

This product is exclusively available under Proteintech Group brand and is not available to purchase from any other manufacturer.

Selected Validation Data



NIH/3T3 cells were subjected to SDS PAGE followed by western blot with 67359-1-Ig (RALBP1 antibody) at dilution of 1:3000 incubated at room temperature for 1.5 hours. This data was developed using the same antibody clone with 67359-1-PBS in a different storage buffer formulation.

1x10⁶ HEK-293 cells were intracellularly stained with 0.25 ug RALBP1 Monoclonal antibody (67359-1-Ig, Clone:1B2F5) and CoraLite®488-Conjugated Goat Anti-Mouse IgG(H+L) (SA00013-1)(red), or 0.25 ug Mouse IgG1 isotype control Mouse McAb (66360-1-Ig, Clone: 1F8D3) (blue). Cells were fixed with 4% PFA and permeabilized with Flow Cytometry Perm Buffer (PF00011-C). This data was developed using the same antibody clone with 67359-1-PBS in a

