

For Research Use Only

MLH1 Monoclonal antibody, PBS Only



Catalog Number: 67350-1-PBS

Featured Product

Basic Information

| | | |
|---|--|---|
| Catalog Number: 67350-1-PBS | GenBank Accession Number: BC006850 | Purification Method: Protein A purification |
| Size: 100ug , Concentration: 1 mg/ml by Nanodrop; | GeneID (NCBI): 4292 | CloneNo.: 2F12C4 |
| Source: Mouse | UNIPROT ID: P40692 | |
| Isotype: IgG2a | Full Name: mutL homolog 1, colon cancer, nonpolyposis type 2 (E. coli) | |
| Immunogen Catalog Number: AG27723 | Calculated MW: 756 aa, 85 kDa | |
| | Observed MW: 85-100 kDa, 40-45 kDa | |

Applications

Tested Applications:
WB, Indirect ELISA

Species Specificity:
Human, rat

Background Information

MLH1, also named as COCA2, belongs to the DNA mismatch repair mutL/hexB family. It heterodimerizes with PMS2 to form MutL alpha which is a component of the post-replicative DNA mismatch repair system (MMR). MutL alpha (MLH1-PMS2) interacts physically with the clamp loader subunits of DNA polymerase III, suggesting that it may play a role to recruit the DNA polymerase III to the site of the MMR. MLH1 also implicated in DNA damage signaling, a process which induces cell cycle arrest and can lead to apoptosis in case of major DNA damages. MLH1 heterodimerizes with MLH3 to form MutL gamma which plays a role in meiosis.(PMID: 16873062, PMID: 18206974) Defects in MLH1 are the cause of hereditary non-polyposis colorectal cancer type 2 (HNPCC2). Defects in MLH1 are a cause of mismatch repair cancer syndrome (MMRCS). Defects in MLH1 are a cause of Muir-Torre syndrome (MTS). Defects in MLH1 are a cause of susceptibility to endometrial cancer. Western blot analysis with an MLH1 antibody detected a 85-100 kDa band. Full-length human MLH1 is specifically cleaved into degradation products of 40-45 kDa by caspase-3 (PMID: 15087450, PMID: 19603033). This antibody is specific to MLH1.

Storage

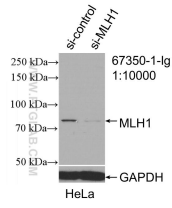
Storage:
Store at -80°C.

Storage Buffer:
PBS Only

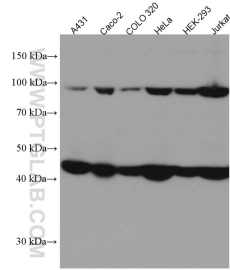
For technical support and original validation data for this product please contact:
T: 1 (888) 4PTGLAB (1-888-478-4522) (toll free in USA), or 1(312) 455-8498 (outside USA) E: proteintech@ptglab.com
W: ptglab.com

This product is exclusively available under Proteintech Group brand and is not available to purchase from any other manufacturer.

Selected Validation Data



WB result of MLH1 antibody (67350-1-Ig; 1:10000; incubated at room temperature for 1.5 hours) with sh-Control and sh-MLH1 transfected HeLa cells. This data was developed using the same antibody clone with 67350-1-PBS in a different storage buffer formulation.



Various lysates were subjected to SDS PAGE followed by western blot with 67350-1-Ig (MLH1 antibody) at dilution of 1:10000 incubated at room temperature for 1.5 hours. This data was developed using the same antibody clone with 67350-1-PBS in a different storage buffer formulation.