

For Research Use Only

# SRY Monoclonal antibody, PBS Only

Catalog Number: 67349-1-PBS



## Basic Information

<b>Catalog Number:</b> 67349-1-PBS	<b>GenBank Accession Number:</b> BC074924	<b>Purification Method:</b> Protein A purification
<b>Size:</b> 100ug , Concentration: 1mg/ml by Nanodrop;	<b>GeneID (NCBI):</b> 6736	<b>CloneNo.:</b> 2E9A4
<b>Source:</b> Mouse	<b>UNIPROT ID:</b> Q05066	
<b>Isotype:</b> IgG1	<b>Full Name:</b> sex determining region Y	
<b>Immunogen Catalog Number:</b> AG12610	<b>Calculated MW:</b> 204 aa, 24 kDa	
	<b>Observed MW:</b> 25-30 kDa	

## Applications

**Tested Applications:**  
WB, Indirect ELISA

**Species Specificity:**  
human, rat

## Background Information

SRY (sex-determining region Y protein) is a transcriptional activator required for male sex determination in mammals. This protein, also referred to as testis-determining factor (TDF), is an HMG box protein that initiates the formation of testis from undifferentiated gonad. The DNA-binding activity of SRY is required for normal testis formation. This DNA-binding activity is thought to be regulated by PKA, which phosphorylates SRY in vivo. Mutations in SRY have been associated with 46,XY gonadal dysgenesis, in which the gonads fail to develop in XY phenotypic females.

## Storage

**Storage:**  
Store at -80°C.

**Storage Buffer:**  
PBS Only

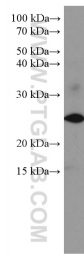
For technical support and original validation data for this product please contact:

T: 1 (888) 4PTGLAB (1-888-478-4522) (toll free in USA), or 1(312) 455-8498 (outside USA)

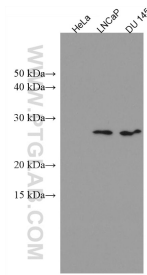
E: [proteintech@ptglab.com](mailto:proteintech@ptglab.com)  
W: [ptglab.com](http://ptglab.com)

**This product is exclusively available under Proteintech Group brand and is not available to purchase from any other manufacturer.**

## Selected Validation Data



LNCaP cells were subjected to SDS PAGE followed by western blot with 67349-1-Ig (SRY antibody) at dilution of 1:2000 incubated at room temperature for 1.5 hours. This data was developed using the same antibody clone with 67349-1-PBS in a different storage buffer formulation.



Various lysates were subjected to SDS PAGE followed by western blot with 67349-1-Ig (SRY antibody) at dilution of 1:1000 incubated at room temperature for 1.5 hours. SRY negative cell line HeLa cell line was served as negative control. This data was developed using the same antibody clone with 67349-1-PBS in a different storage buffer formulation.