

For Research Use Only

SRY Monoclonal antibody

Catalog Number: 67349-1-Ig **1 Publications**



Basic Information

Catalog Number: 67349-1-Ig	GenBank Accession Number: BC074924	Purification Method: Protein A purification
Size: 150ul , Concentration: 1600 ug/ml by Nanodrop and 1000 ug/ml by Bradford method using BSA as the standard;	GeneID (NCBI): 6736	CloneNo.: 2E9A4
Source: Mouse	UNIPROT ID: Q05066	Recommended Dilutions: WB 1:1000-1:4000
Isotype: IgG1	Full Name: sex determining region Y	
Immunogen Catalog Number: AG12610	Calculated MW: 204 aa, 24 kDa	
	Observed MW: 25-30 kDa	

Applications

Tested Applications: WB, ELISA	Positive Controls: WB : LNCaP cells, DU 145 cells
Cited Applications: WB	
Species Specificity: human, rat	
Cited Species: human	

Background Information

SRY (sex-determining region Y protein) is a transcriptional activator required for male sex determination in mammals. This protein, also referred to as testis-determining factor (TDF), is an HMG box protein that initiates the formation of testis from undifferentiated gonad. The DNA-binding activity of SRY is required for normal testis formation. This DNA-binding activity is thought to be regulated by PKA, which phosphorylates SRY in vivo. Mutations in SRY have been associated with 46,XY gonadal dysgenesis, in which the gonads fail to develop in XY phenotypic females.

Notable Publications

Author	Pubmed ID	Journal	Application
James W Clancy	35235806	Cell Rep	WB

Storage

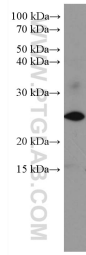
Storage:
Store at -20°C. Stable for one year after shipment.
Storage Buffer:
PBS with 0.02% sodium azide and 50% glycerol pH 7.3.
Aliquoting is unnecessary for -20°C storage

*** 20ul sizes contain 0.1% BSA

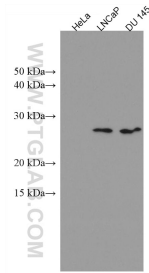
For technical support and original validation data for this product please contact:
T: 1 (888) 4PTGLAB (1-888-478-4522) (toll free in USA), or 1(312) 455-8498 (outside USA)
E: proteintech@ptglab.com
W: ptglab.com

This product is exclusively available under Proteintech Group brand and is not available to purchase from any other manufacturer.

Selected Validation Data



LNCaP cells were subjected to SDS PAGE followed by western blot with 67349-1-Ig (SRY antibody) at dilution of 1:2000 incubated at room temperature for 1.5 hours.



Various lysates were subjected to SDS PAGE followed by western blot with 67349-1-Ig (SRY antibody) at dilution of 1:1000 incubated at room temperature for 1.5 hours. SRY negative cell line HeLa cell line was served as negative control.