

For Research Use Only

MAP2K4 Monoclonal antibody, PBS Only



Catalog Number: 67333-1-PBS

Basic Information

Catalog Number: 67333-1-PBS	GenBank Accession Number: BC036032	Purification Method: Protein A purification
Size: 100ug , Concentration: 1 mg/ml by Nanodrop;	GeneID (NCBI): 6416	CloneNo.: 2E4C1
Source: Mouse	UNIPROT ID: P45985	
Isotype: IgG2b	Full Name: mitogen-activated protein kinase kinase 4	
Immunogen Catalog Number: AG11348	Calculated MW: 399 aa, 44 kDa	
	Observed MW: 44-50 kDa	

Applications

Tested Applications:
WB, IHC, Indirect ELISA

Species Specificity:
Human, rat

Background Information

MEK4 is also named as JNKK1, MAP2K4, MKK4, PRKMK4, SEK1, SERK1, SKK1 and belongs to the protein kinase superfamily. MEK4 is a member of the mitogen-activated protein kinase family, originally identified as a kinase involved in the stress-activated protein kinase pathway by directly phosphorylating c-Jun NH 2-terminal kinase. This protein has 2 isoforms produced by alternative splicing.

Storage

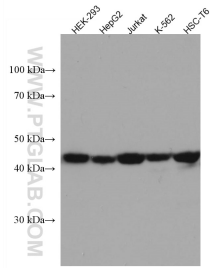
Storage:
Store at -80°C.

Storage Buffer:
PBS Only

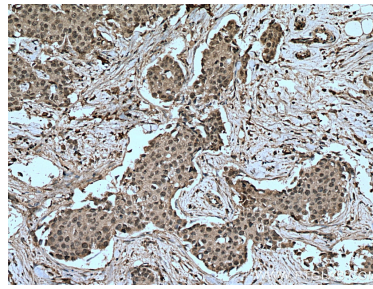
For technical support and original validation data for this product please contact:
T: 1 (888) 4PTGLAB (1-888-478-4522) (toll free in USA), or 1(312) 455-8498 (outside USA) E: proteintech@ptglab.com
W: ptglab.com

This product is exclusively available under Proteintech Group brand and is not available to purchase from any other manufacturer.

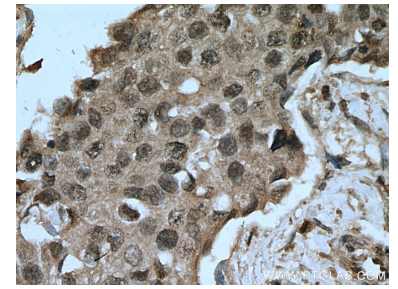
Selected Validation Data



Various lysates were subjected to SDS PAGE followed by western blot with 67333-1-Ig (MAP2K4 antibody) at dilution of 1:20000 incubated at room temperature for 1.5 hours. This data was developed using the same antibody clone with 67333-1-PBS in a different storage buffer formulation.



Immunohistochemical analysis of paraffin-embedded human breast cancer tissue slide using 67333-1-Ig (MAP2K4 antibody) at dilution of 1:500 (under 10x lens). Heat mediated antigen retrieval with Tris-EDTA buffer (pH 9.0). This data was developed using the same antibody clone with 67333-1-PBS in a different storage buffer formulation.



Immunohistochemical analysis of paraffin-embedded human breast cancer tissue slide using 67333-1-Ig (MAP2K4 antibody) at dilution of 1:500 (under 40x lens). Heat mediated antigen retrieval with Tris-EDTA buffer (pH 9.0). This data was developed using the same antibody clone with 67333-1-PBS in a different storage buffer formulation.