

For Research Use Only

LAMR1,RPSA Monoclonal antibody, PBS Only

Catalog Number:67324-1-PBS



Basic Information

Catalog Number: 67324-1-PBS	GenBank Accession Number: BC050688	Purification Method: Thiophilic affinity chromatograph
Size: 100ug , Concentration: 1 mg/ml by Nanodrop;	GeneID (NCBI): 3921	CloneNo.: 2A9A1
Source: Mouse	UNIPROT ID: P08865	
Isotype: IgM	Full Name: ribosomal protein SA	
Immunogen Catalog Number: AG6190	Calculated MW: 33 kDa	
	Observed MW: 37-40 kDa	

Applications

Tested Applications:
WB, IHC, IF/ICC, Indirect ELISA

Species Specificity:
Human, mouse, rat

Background Information

The ribosomal protein SA (RPSA), previously named 67 kD laminin receptor(67LR), 37 kD laminin receptor precursor (37LRP) and p40 ribosome-associated protein, is a multifunctional protein, that plays a role in a number of pathological processes, such as cancer and prion diseases. It is overexpressed in various cancer cell lines, and the level of the laminin receptor transcript is higher in colon carcinoma tissue and lung cancer cell line than their normal counterparts.

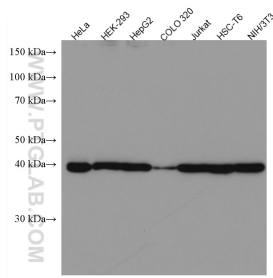
Storage

Storage:
Store at -80°C.
Storage Buffer:
PBS Only

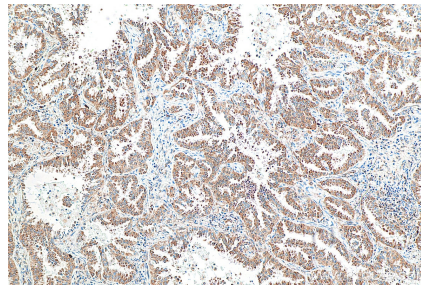
For technical support and original validation data for this product please contact:
T: 1 (888) 4PTGLAB (1-888-478-4522) (toll free in USA), or 1(312) 455-8498 (outside USA) E: proteintech@ptglab.com
W: ptglab.com

This product is exclusively available under Proteintech Group brand and is not available to purchase from any other manufacturer.

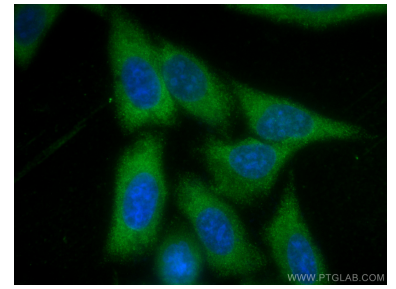
Selected Validation Data



Various lysates were subjected to SDS PAGE followed by western blot with 67324-1-Ig (LAMR1,RP5A antibody) at dilution of 1:10000 incubated at room temperature for 1.5 hours. This data was developed using the same antibody clone with 67324-1-PBS in a different storage buffer formulation.



Immunohistochemical analysis of paraffin-embedded human lung cancer tissue slide using 67324-1-Ig (LAMR1,RP5A antibody) at dilution of 1:1000 (under 10x lens). Heat mediated antigen retrieval with Tris-EDTA buffer (pH 9.0). This data was developed using the same antibody clone with 67324-1-PBS in a different storage buffer formulation.



Immunofluorescent analysis of (-20°C Methanol) fixed HepG2 cells using LAMR1,RP5A antibody (67324-1-Ig, Clone: 2A9A1) at dilution of 1:800 and CoraLite®488-Conjugated Goat Anti-Mouse IgG(H+L). This data was developed using the same antibody clone with 67324-1-PBS in a different storage buffer formulation.