

For Research Use Only

# EPHX2 Monoclonal antibody, PBS Only



Catalog Number: 67322-1-PBS

Featured Product

## Basic Information

Catalog Number:

67322-1-PBS

Size:

100ug, Concentration: 1mg/ml by Nanodrop;

Source:

Mouse

Isotype:

IgG2b

Immunogen Catalog Number:

AG4870

GenBank Accession Number:

BC013874

GeneID (NCBI):

2053

UNIPROT ID:

P34913

Full Name:

epoxide hydrolase 2, cytoplasmic

Calculated MW:

63 kDa

Observed MW:

56-63 kDa

Purification Method:

Protein A purification

CloneNo.:

4H6C8

## Applications

Tested Applications:

WB, IHC, IF/ICC, Indirect ELISA

Species Specificity:

human, pig

## Background Information

EPHX2(Epoxide hydrolase 2) acts on epoxides (alkene oxides, oxiranes) and arene oxides and plays a role in xenobiotic metabolism by degrading potentially toxic epoxides. A number of single nucleotide polymorphisms (SNPs) in human EPHX2 have been linked to cardiovascular disease risk, including increased risk of coronary heart disease, hyperlipoproteinemia, and type-2 diabetes (PMID: 14732757, 16595607, 14673705, 15845398, 17460077). It was observed in many tissues with the band of 63 kDa in the western blot. It has also been reported that the N-terminal domain might promote dimerization of EPHX2 (PMID:21553642).

## Storage

Storage:

Store at -80°C.

Storage Buffer:

PBS Only

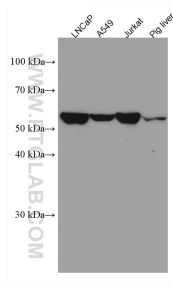
For technical support and original validation data for this product please contact:

T: 1 (888) 4PTGLAB (1-888-478-4522) (toll free in USA), or 1(312) 455-8498 (outside USA)

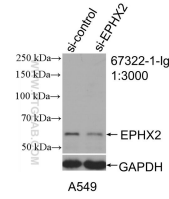
E: [proteintech@ptglab.com](mailto:proteintech@ptglab.com)  
W: [ptglab.com](http://ptglab.com)

This product is exclusively available under Proteintech Group brand and is not available to purchase from any other manufacturer.

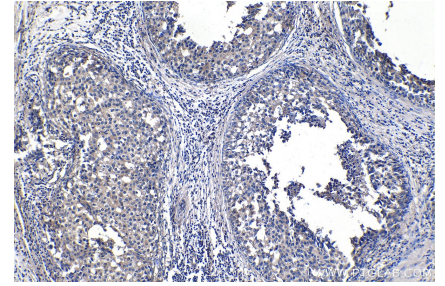
## Selected Validation Data



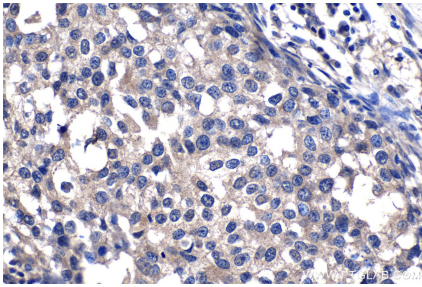
Various lysates were subjected to SDS PAGE followed by western blot with 67322-1-Ig (EPHX2 antibody) at dilution of 1:5000 incubated at room temperature for 1.5 hours. This data was developed using the same antibody clone with 67322-1-PBS in a different storage buffer formulation.



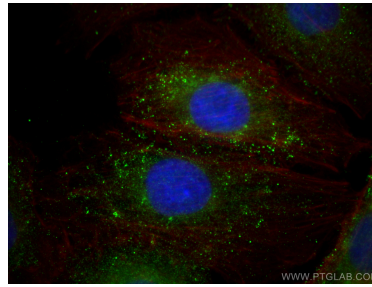
WB result of EPHX2 antibody (67322-1-Ig; 1:3000; incubated at room temperature for 1.5 hours) with sh-Control and sh-EPHX2 transfected A549 cells. This data was developed using the same antibody clone with 67322-1-PBS in a different storage buffer formulation.



Immunohistochemical analysis of paraffin-embedded human breast cancer tissue slide using 67322-1-Ig (EPHX2 antibody) at dilution of 1:4000 (under 10x lens). This data was developed using the same antibody clone with 67322-1-PBS in a different storage buffer formulation.



Immunohistochemical analysis of paraffin-embedded human breast cancer tissue slide using 67322-1-Ig (EPHX2 antibody) at dilution of 1:4000 (under 40x lens). This data was developed using the same antibody clone with 67322-1-PBS in a different storage buffer formulation.



Immunofluorescent analysis of (4% PFA) fixed A549 cells using EPHX2 antibody (67322-1-Ig, Clone: 4H6C8) at dilution of 1:400 and Multi-rAb CoraLite® Plus 488-Goat Anti-Mouse Recombinant Secondary Antibody (H+L) (RGAM002), CL594-Phalloidin (red). This data was developed using the same antibody clone with 67322-1-PBS in a different storage buffer formulation.