

For Research Use Only

TLR8 Monoclonal antibody

Catalog Number: 67317-1-Ig



Basic Information

| | | |
|--|--|--|
| Catalog Number: 67317-1-Ig | GenBank Accession Number: BC101075 | Purification Method: Protein G purification |
| Size: 150ul , Concentration: 700 ug/ml by Nanodrop and 500 ug/ml by Bradford method using BSA as the standard; | GeneID (NCBI): 51311 | CloneNo.: 3B6A4 |
| Source: Mouse | UNIPROT ID: Q9NR97 | Recommended Dilutions: WB 1:5000-1:50000 IHC 1:50-1:500 IF-P 1:200-1:800 |
| Isotype: IgG1 | Full Name: toll-like receptor 8 | |
| Immunogen Catalog Number: AG16566 | Calculated MW: 1041 aa, 120 kDa | |
| | Observed MW: 120 kDa | |

Applications

Tested Applications:
WB, IHC, IF-P, ELISA

Species Specificity:
Human

Note-IHC: suggested antigen retrieval with TE buffer pH 9.0; (*) Alternatively, antigen retrieval may be performed with citrate buffer pH 6.0

Positive Controls:

WB : Daudi cells, U-937 cells, K-562 cells, HL-60 cells

IHC : human tonsillitis tissue,

IF-P : human tonsillitis tissue,

Background Information

Toll-like receptors (TLRs) are a group of pathogen recognition receptors (PRRs) that can be divided into two subfamilies depending on their subcellular localization (PMID: 32268138). Toll-like receptor 8 (TLR8), a sensor for pathogen-derived single-stranded RNA (ssRNA), binds to uridine (Uri) and ssRNA to induce defense responses (PMID:30535046). TLR8 proteins were expressed in spleen, epididymal sperm, testicular sperm cells, and Leydig cells but were weak in Sertoli cells. It can identify two isoforms, 120 and 122 kDa.

Storage

Storage:

Store at -20°C.

Storage Buffer:

PBS with 0.02% sodium azide and 50% glycerol pH 7.3.

Aliquoting is unnecessary for -20°C storage

*** 20ul sizes contain 0.1% BSA

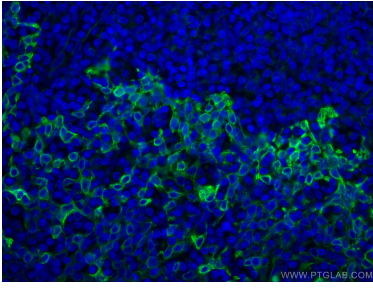
For technical support and original validation data for this product please contact:

T: 1 (888) 4PTGLAB (1-888-478-4522) (toll free in USA), or 1(312) 455-8498 (outside USA)

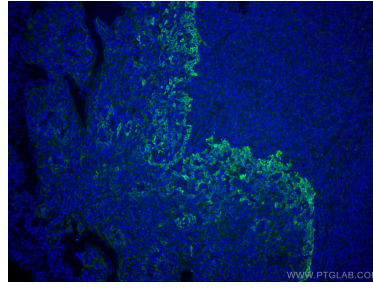
E: proteintech@ptglab.com
W: ptglab.com

This product is exclusively available under Proteintech Group brand and is not available to purchase from any other manufacturer.

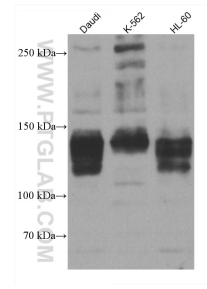
Selected Validation Data



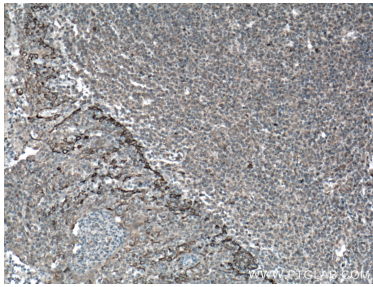
Immunofluorescent analysis of (4% PFA) fixed human tonsillitis tissue using TLR8 antibody (67317-1-Ig, Clone: 3B6A4) at dilution of 1:400 and CoraLite®488-Conjugated Goat Anti-Mouse IgG(H+L).



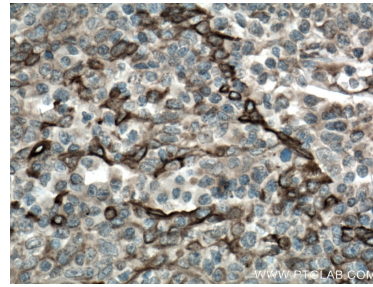
Immunofluorescent analysis of (4% PFA) fixed human tonsillitis tissue using TLR8 antibody (67317-1-Ig, Clone: 3B6A4) at dilution of 1:400 and CoraLite®488-Conjugated Goat Anti-Mouse IgG(H+L).



Various lysates were subjected to SDS PAGE followed by western blot with 67317-1-Ig (TLR8 antibody) at dilution of 1:10000 incubated at room temperature for 1.5 hours.



Immunohistochemical analysis of paraffin-embedded human tonsillitis tissue slide using 67317-1-Ig (TLR8 antibody) at dilution of 1:200 (under 10x lens). Heat mediated antigen retrieval with Tris-EDTA buffer (pH 9.0).



Immunohistochemical analysis of paraffin-embedded human tonsillitis tissue slide using 67317-1-Ig (TLR8 antibody) at dilution of 1:200 (under 40x lens). Heat mediated antigen retrieval with Tris-EDTA buffer (pH 9.0).