

For Research Use Only

DCPS Monoclonal antibody, PBS Only



Catalog Number: 67311-1-PBS

Basic Information

Catalog Number: 67311-1-PBS	GenBank Accession Number: BC014532	Purification Method: Protein A purification
Size: 100ug , Concentration: 1 mg/ml by Nanodrop;	GeneID (NCBI): 28960	CloneNo.: 1B2E4
Source: Mouse	UNIPROT ID: Q96C86	
Isotype: IgG2b	Full Name: decapping enzyme, scavenger	
Immunogen Catalog Number: AG8872	Calculated MW: 337 aa, 39 kDa	
	Observed MW: 35-40 kDa	

Applications

Tested Applications:
WB, IF, IHC, Indirect ELISA

Species Specificity:
Human, Mouse, Rat

Background Information

DcpS, which is a member of the histidine triad (HIT) superfamily of pyrophosphatases, is the first HIT protein with a defined biological function and identifies the HIT motif as a new mRNA decapping domain. DcpS can encode a 38-40 kDa protein, and has the potential to form a homodimer of 80 kDa (PMID: 12198172).

Storage

Storage:
Store at -80°C.

Storage Buffer:
PBS Only

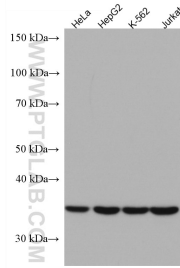
For technical support and original validation data for this product please contact:

T: 1 (888) 4PTGLAB (1-888-478-4522) (toll free
in USA), or 1(312) 455-8498 (outside USA)

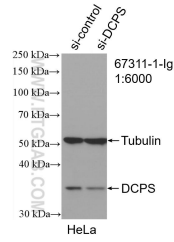
E: proteintech@ptglab.com
W: ptglab.com

This product is exclusively available under Proteintech Group brand and is not available to purchase from any other manufacturer.

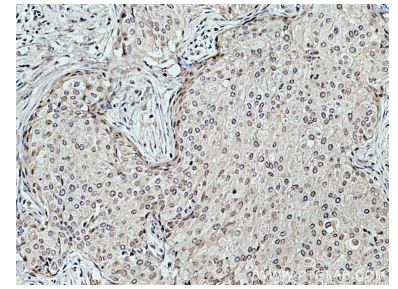
Selected Validation Data



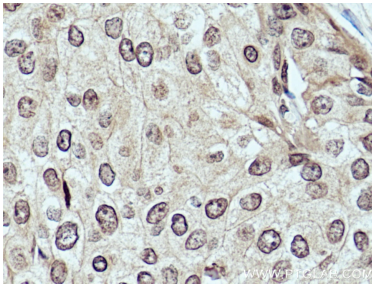
Various lysates were subjected to SDS PAGE followed by western blot with 67311-1-Ig (DCPS antibody) at dilution of 1:3000 incubated at room temperature for 1.5 hours. This data was developed using the same antibody clone with 67311-1-PBS in a different storage buffer formulation.



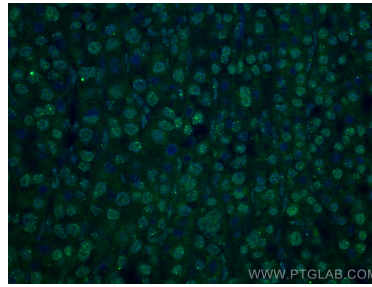
WB result of DCPS antibody (67311-1-Ig: 1:6000; incubated at room temperature for 1.5 hours) with sh-Control and sh-DCPS transfected HeLa cells. This data was developed using the same antibody clone with 67311-1-PBS in a different storage buffer formulation.



Immunohistochemical analysis of paraffin-embedded human breast cancer tissue slide using 67311-1-Ig (DCPS antibody) at dilution of 1:500 (under 10x lens). Heat mediated antigen retrieval with Tris-EDTA buffer (pH 9.0). This data was developed using the same antibody clone with 67311-1-PBS in a different storage buffer formulation.



Immunohistochemical analysis of paraffin-embedded human breast cancer tissue slide using 67311-1-Ig (DCPS antibody) at dilution of 1:500 (under 40x lens). Heat mediated antigen retrieval with Tris-EDTA buffer (pH 9.0). This data was developed using the same antibody clone with 67311-1-PBS in a different storage buffer formulation.



Immunofluorescent analysis of (4% PFA) fixed human liver cancer tissue using DCPS antibody (67311-1-Ig, Clone: 1B2E4) at dilution of 1:400 and CoraLite® 488-Conjugated AffiniPure Goat Anti-Mouse IgG(H+L). This data was developed using the same antibody clone with 67311-1-PBS in a different storage buffer formulation.