

For Research Use Only

# Luciferase Monoclonal antibody, PBS Only



Catalog Number: 67293-1-PBS

## Basic Information

<b>Catalog Number:</b> 67293-1-PBS	<b>GenBank Accession Number:</b> AY015993	<b>Purification Method:</b> Protein A purification
<b>Size:</b> 100ug , Concentration: 1 mg/ml by Nanodrop;	<b>GeneID (NCBI):</b> Full Name:	<b>CloneNo.:</b> 2D2E1
<b>Source:</b> Mouse	<b>Calculated MW:</b> 20 kDa	
<b>Isotype:</b> IgG2a		
<b>Immunogen Catalog Number:</b> AG13000		

## Applications

**Tested Applications:**  
WB, Indirect ELISA

**Species Specificity:**  
Gaussia princeps

## Background Information

This antibody is designed to detect the luciferase of luciferase (Gaussia princeps) tagged protein.

## Storage

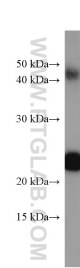
**Storage:**  
Store at -80°C.

**Storage Buffer:**  
PBS Only

For technical support and original validation data for this product please contact:  
T: 1 (888) 4PTGLAB (1-888-478-4522) (toll free in USA), or 1(312) 455-8498 (outside USA)  
E: [proteintech@ptglab.com](mailto:proteintech@ptglab.com)  
W: [ptglab.com](http://ptglab.com)

This product is exclusively available under Proteintech Group brand and is not available to purchase from any other manufacturer.

## Selected Validation Data



Luciferase tagged protein were subjected to SDS PAGE followed by western blot with 67293-1-Ig (Luciferase antibody) at dilution of 1:20000 incubated at room temperature for 1.5 hours. This data was developed using the same antibody clone with 67293-1-PBS in a different storage buffer formulation.