

For Research Use Only

Glucagon Monoclonal antibody, PBS Only



Catalog Number: 67286-1-PBS

Basic Information

Catalog Number: 67286-1-PBS	GenBank Accession Number: BC005278	Purification Method: Protein G purification
Size: 100ug , Concentration: 1mg/ml by Nanodrop;	GeneID (NCBI): 2641	CloneNo.: 2A8G1
Source: Mouse	UNIPROT ID: P01275	
Isotype: IgG1	Full Name: glucagon	
Immunogen Catalog Number: AG10629	Calculated MW: 180 aa, 21 kDa	

Applications

Tested Applications:
IF, IHC, Indirect ELISA

Species Specificity:
Human, mouse

Background Information

Glucagon is a 29-amino acid peptide hormone secreted from the pancreatic alpha cells with a powerful stimulatory effect on hepatic glucose production acting to increase plasma glucose levels. Glucagon is best known as the counter-regulatory hormone to INS, and normal glucose homeostasis depends largely on the balanced secretion of INS and glucagon from the pancreatic beta and alpha cells, respectively. The regulation of glucose metabolism by glucagon is mediated by its direct action on the peripheral tissues such as the liver and also by the brain. Glucagon is also released postprandially in a transient manner, which was shown to be involved in inhibition of food intake via reduction of meal size.

Storage

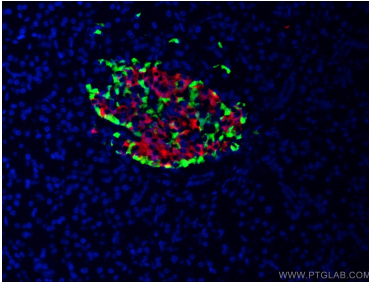
Storage:
Store at -80°C.

Storage Buffer:
PBS Only

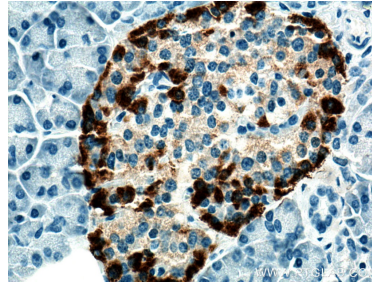
For technical support and original validation data for this product please contact:
T: 1 (888) 4PTGLAB (1-888-478-4522) (toll free in USA), or 1(312) 455-8498 (outside USA) E: proteintech@ptglab.com
W: ptglab.com

This product is exclusively available under Proteintech Group brand and is not available to purchase from any other manufacturer.

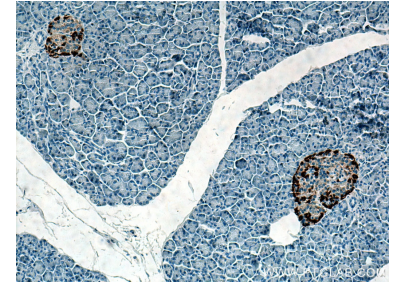
Selected Validation Data



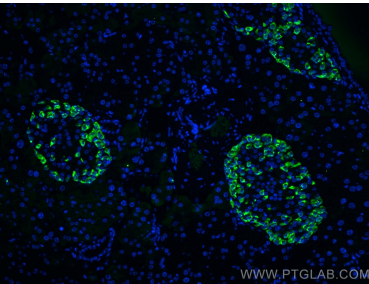
Immunofluorescent analysis of (4% PFA) fixed human pancreas tissue using 67286-1-Ig (Glucagon antibody) at dilution of 1:50 and Coralite488-Conjugated AffiniPure Goat Anti-Mouse IgG(H+L). The B cells of the islets of Langerhans was labelled in red with 15848-1-AP (Insulin antibody). This data was developed using the same antibody clone with 67286-1-PBS in a different storage buffer formulation.



Immunohistochemical analysis of paraffin-embedded human pancreas tissue slide using 67286-1-Ig (Glucagon antibody) at dilution of 1:10000 (under 40x lens). Heat mediated antigen retrieval with Tris-EDTA buffer (pH 9.0). This data was developed using the same antibody clone with 67286-1-PBS in a different storage buffer formulation.



Immunohistochemical analysis of paraffin-embedded human pancreas tissue slide using 67286-1-Ig (Glucagon antibody) at dilution of 1:10000 (under 10x lens). Heat mediated antigen retrieval with Tris-EDTA buffer (pH 9.0). This data was developed using the same antibody clone with 67286-1-PBS in a different storage buffer formulation.



Immunofluorescent analysis of (4% PFA) fixed paraffin-embedded mouse pancreas tissue using Glucagon antibody (67286-1-Ig, Clone: 2A8G1) at dilution of 1:400 and Coralite®488-Conjugated AffiniPure Goat Anti-Mouse IgG(H+L) (SA00013-1). Heat mediated antigen retrieval with Tris-EDTA buffer (pH 9.0). This data was developed using the same antibody clone with 67286-1-PBS in a different storage buffer formulation.