

For Research Use Only

# PSG1 Monoclonal antibody, PBS Only (Capture)

Catalog Number: 67269-1-PBS



## Basic Information

<b>Catalog Number:</b> 67269-1-PBS	<b>GenBank Accession Number:</b> BC022338	<b>Purification Method:</b> Protein G purification
<b>Size:</b> 100ug , Concentration: 1mg/ml by Nanodrop;	<b>GeneID (NCBI):</b> 5669	<b>CloneNo.:</b> 1C6C4
<b>Source:</b> Mouse	<b>UNIPROT ID:</b> P11464	
<b>Isotype:</b> IgG1	<b>Full Name:</b> pregnancy specific beta-1-glycoprotein 1	
<b>Immunogen Catalog Number:</b> AG28604	<b>Calculated MW:</b> 426 aa, 48 kDa	
	<b>Observed MW:</b> 54-70 kDa	

## Applications

**Tested Applications:**  
WB, IHC, IF-P, Cytometric bead array, Indirect ELISA

**Species Specificity:**  
human

## Product Information

67269-1-PBS targets PSG1 as part of a matched antibody pair:

MP50302-2: 67269-1-PBS capture and 67269-4-PBS detection (validated in Cytometric bead array)

Unconjugated mouse monoclonal antibody pair in PBS only (BSA and azide free) storage buffer at a concentration of 1 mg/mL, ready for conjugation.

This conjugation ready format makes antibodies ideal for use in many applications including: ELISAs, multiplex assays requiring matched pairs, mass cytometry, and multiplex imaging applications. Antibody use should be optimized by the end user for each application and assay.

## Storage

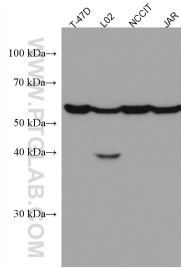
**Storage:**  
Store at -80°C.

**Storage Buffer:**  
PBS Only

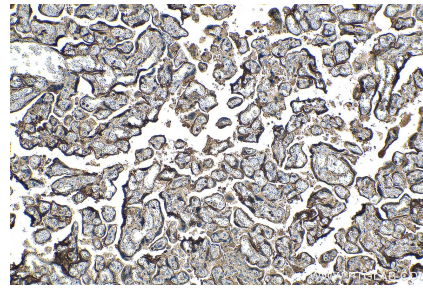
For technical support and original validation data for this product please contact:  
T: 1 (888) 4PTGLAB (1-888-478-4522) (toll free in USA), or 1(312) 455-8498 (outside USA)      E: proteintech@ptglab.com  
W: ptglab.com

This product is exclusively available under Proteintech Group brand and is not available to purchase from any other manufacturer.

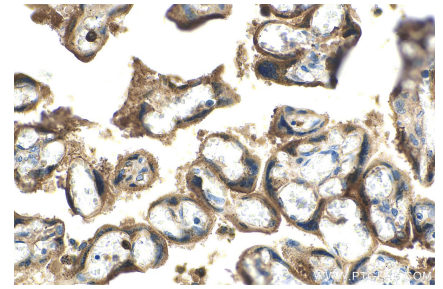
## Selected Validation Data



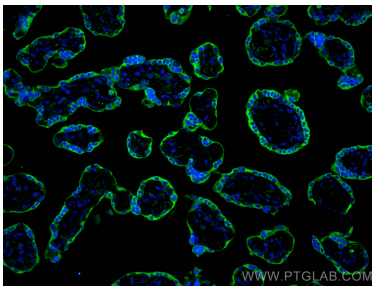
T-47D cells were subjected to SDS PAGE followed by western blot with 67269-1-Ig (PSG1 antibody) at dilution of 1:20000 incubated at room temperature for 1.5 hours. This data was developed using the same antibody clone with 67269-1-PBS in a different storage buffer formulation.



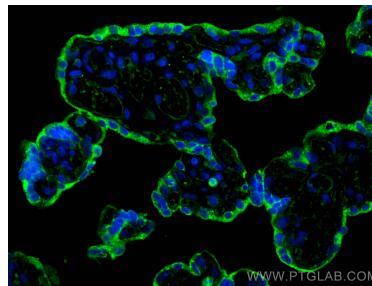
Immunohistochemical analysis of paraffin-embedded human placenta tissue slide using 67269-1-Ig (PSG1 antibody) at dilution of 1:5000 (under 10x lens). Heat mediated antigen retrieval with Tris-EDTA buffer (pH 9.0). This data was developed using the same antibody clone with 67269-1-PBS in a different storage buffer formulation.



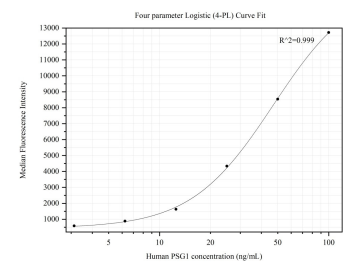
Immunohistochemical analysis of paraffin-embedded human placenta tissue slide using 67269-1-Ig (PSG1 antibody) at dilution of 1:5000 (under 40x lens). Heat mediated antigen retrieval with Tris-EDTA buffer (pH 9.0). This data was developed using the same antibody clone with 67269-1-PBS in a different storage buffer formulation.



Immunofluorescent analysis of (4% PFA) fixed paraffin-embedded human placenta tissue using PSG1 antibody (67269-1-Ig, Clone: 1C6C4) at dilution of 1:400 and CoraLite@488-Conjugated AffiniPure Goat Anti-Mouse IgG(H+L) (SA00013-1). Heat mediated antigen retrieval with Tris-EDTA buffer (pH 9.0). This data was developed using the same antibody clone with 67269-1-PBS in a different storage buffer formulation.



Immunofluorescent analysis of (4% PFA) fixed paraffin-embedded human placenta tissue using PSG1 antibody (67269-1-Ig, Clone: 1C6C4) at dilution of 1:400 and CoraLite@488-Conjugated AffiniPure Goat Anti-Mouse IgG(H+L) (SA00013-1). Heat mediated antigen retrieval with Tris-EDTA buffer (pH 9.0). This data was developed using the same antibody clone with 67269-1-PBS in a different storage buffer formulation.



Cytometric bead array standard curve of MP50302-2, PSG1 Monooclonal Matched Antibody Pair, PBS Only. Capture antibody: 67269-1-PBS. Detection antibody: 67269-4-PBS. Standard: Ag28604. Range: 3.125-100 ng/mL