

For Research Use Only

# KRAS-4A-specific Monoclonal antibody, PBS Only

Catalog Number: 67266-1-PBS



## Basic Information

Catalog Number:

67266-1-PBS

Size:

100ug, Concentration: 1mg/ml by  
Nanodrop;

Source:

Mouse

Isotype:

IgG2a

GenBank Accession Number:

NM\_033360

GeneID (NCBI):

3845

UNIPROT ID:

P01116

Full Name:

v-Ki-ras2 Kirsten rat sarcoma viral  
oncogene homolog

Calculated MW:

21 kDa

Observed MW:

22 kDa

Purification Method:

Protein A purification

CloneNo.:

3C8F5

## Applications

Tested Applications:

WB, IF/ICC, ELISA

Species Specificity:

human, mouse, rat, pig

## Background Information

RAS (derived from 'RAr Sarcoma' virus) gene family includes KRAS, HRAS, and NRAS. These genes encode very similar 21 kDa proteins and are homologs of rodent sarcoma virus genes that have transforming abilities. KRAS has two isoforms, 4A and 4B. This antibody is specific for KRAS-4A, which is also named as KRAS-2A.

## Storage

Storage:

Store at -80°C.

Storage Buffer:

PBS Only

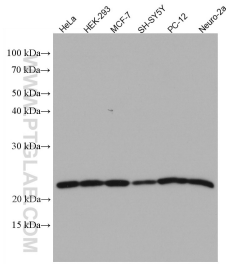
For technical support and original validation data for this product please contact:

T: 1 (888) 4PTGLAB (1-888-478-4522) (toll free  
in USA), or 1(312) 455-8498 (outside USA)

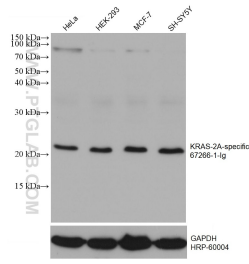
E: [proteintech@ptglab.com](mailto:proteintech@ptglab.com)  
W: [ptglab.com](http://ptglab.com)

This product is exclusively available under Proteintech Group brand and is not available to purchase from any other manufacturer.

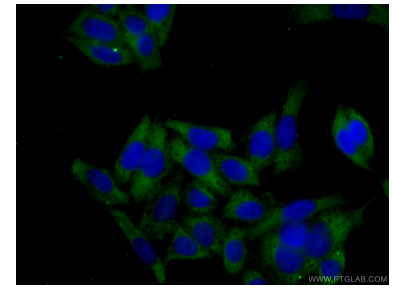
## Selected Validation Data



Various lysates were subjected to SDS PAGE followed by western blot with 67266-1-Ig (KRAS-2A-specific antibody) at dilution of 1:3000 incubated at room temperature for 1.5 hours. This data was developed using the same antibody clone with 67266-1-PBS in a different storage buffer formulation.



Various lysates were subjected to SDS PAGE followed by western blot with 67266-1-Ig (KRAS-2A-specific antibody) at dilution of 1:3000 incubated at room temperature for 1.5 hours. The membrane was stripped and reblotted with HRP-conjugated GAPDH Monoclonal antibody (HRP-60004) as loading control. This data was developed using the same antibody clone with 67266-1-PBS in a different storage buffer formulation.



Immunofluorescent analysis of (-20°C Ethanol) fixed HeLa cells using 67266-1-Ig (KRAS-2A-specific antibody) at dilution of 1:100 and CoraLite488-Conjugated AffiniPure Goat Anti-Mouse IgG(H+L). This data was developed using the same antibody clone with 67266-1-PBS in a different storage buffer formulation.