

For Research Use Only

# CYP2E1-Specific Monoclonal antibody, PBS Only

Catalog Number: 67263-1-PBS



## Basic Information

<b>Catalog Number:</b> 67263-1-PBS	<b>GenBank Accession Number:</b> NM_000773	<b>Purification Method:</b> Protein A purification
<b>Size:</b> 100ug , Concentration: 1mg/ml by Nanodrop;	<b>GeneID (NCBI):</b> 1571	<b>CloneNo.:</b> 1F12G7
<b>Source:</b> Mouse	<b>UNIPROT ID:</b> P05181	
<b>Isotype:</b> IgG2b	<b>Full Name:</b> cytochrome P450, family 2, subfamily E, polypeptide 1	
	<b>Calculated MW:</b> 57 kDa	
	<b>Observed MW:</b> 50-57 kDa	

## Applications

**Tested Applications:**  
WB, IHC, IF-P, Indirect ELISA

**Species Specificity:**  
mouse, rat, pig

## Background Information

CYP2E1, also named as CYP11E1, 4-nitrophenol 2-hydroxylase, P450-J and CYP2E, belongs to the cytochrome P450 family. CYP2E1 metabolizes several precarcinogens, drugs, and solvents to reactive metabolites. It inactivates a number of drugs and xenobiotics and also bioactivates many xenobiotic substrates to their hepatotoxic or carcinogenic forms. CYP2E1 catalyze the reaction: 4-nitrophenol + NADPH + O<sub>2</sub> = 4-nitrocatechol + NADP<sup>+</sup> + H<sub>2</sub>O. CYP2E1 can be detected as 50-57 kDa (full-length) and ~40 kDa (N-terminal signal peptide cleaved) (PMID: 21130154). The antibody is specific to CYP2E1.

## Storage

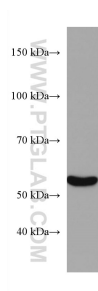
**Storage:**  
Store at -80°C.

**Storage Buffer:**  
PBS Only

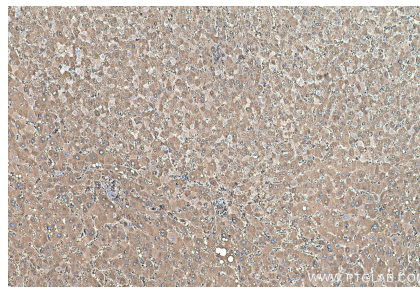
For technical support and original validation data for this product please contact:  
T: 1 (888) 4PTGLAB (1-888-478-4522) (toll free in USA), or 1(312) 455-8498 (outside USA)  
E: [proteintech@ptglab.com](mailto:proteintech@ptglab.com)  
W: [ptglab.com](http://ptglab.com)

This product is exclusively available under Proteintech Group brand and is not available to purchase from any other manufacturer.

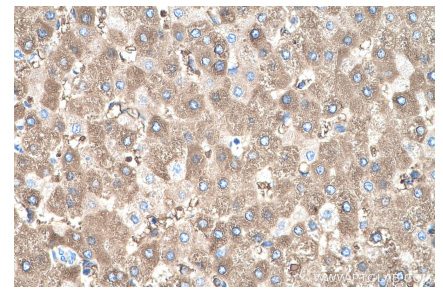
## Selected Validation Data



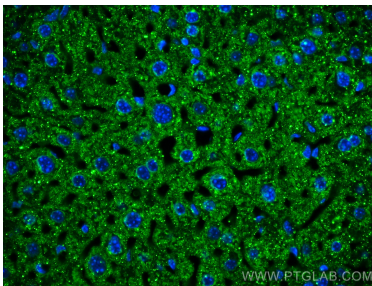
pig liver tissue were subjected to SDS PAGE followed by western blot with 67263-1-Ig (CYP2E1-Specific antibody) at dilution of 1:3000 incubated at room temperature for 1.5 hours. This data was developed using the same antibody clone with 67263-1-PBS in a different storage buffer formulation.



Immunohistochemical analysis of paraffin-embedded human liver tissue slide using 67263-1-Ig (CYP2E1-Specific antibody) at dilution of 1:1000 (under 10x lens). Heat mediated antigen retrieval with Tris-EDTA buffer (pH 9.0). This data was developed using the same antibody clone with 67263-1-PBS in a different storage buffer formulation.



Immunohistochemical analysis of paraffin-embedded human liver tissue slide using 67263-1-Ig (CYP2E1-Specific antibody) at dilution of 1:1000 (under 40x lens). Heat mediated antigen retrieval with Tris-EDTA buffer (pH 9.0). This data was developed using the same antibody clone with 67263-1-PBS in a different storage buffer formulation.



Immunofluorescent analysis of (4% PFA) fixed paraffin-embedded mouse liver tissue using CYP2E1-Specific antibody (67263-1-Ig, Clone: 1F12G7) at dilution of 1:800 and Coralite® 488-Conjugated Goat Anti-Mouse IgG(H+L) (SA00013-1). Heat mediated antigen retrieval with Tris-EDTA buffer (pH 9.0). This data was developed using the same antibody clone with 67263-1-PBS in a different storage buffer formulation.