

For Research Use Only

# LAMC3-Specific Monoclonal antibody, PBS Only

Catalog Number: 67261-1-PBS



## Basic Information

<b>Catalog Number:</b> 67261-1-PBS	<b>GenBank Accession Number:</b> NM_006059	<b>Purification Method:</b> Protein A purification
<b>Size:</b> 100ug , Concentration: 1mg/ml by Nanodrop;	<b>GeneID (NCBI):</b> 10319	<b>CloneNo.:</b> 4B8C5
<b>Source:</b> Mouse	<b>UNIPROT ID:</b> Q9Y6N6	
<b>Isotype:</b> IgG2a	<b>Full Name:</b> laminin, gamma 3	
<b>Immunogen Catalog Number:</b> AG19568	<b>Calculated MW:</b> 1575 aa, 171 kDa	
	<b>Observed MW:</b> 180-200 kDa	

## Applications

**Tested Applications:**  
WB, IF-P, Cytometric bead array, Indirect ELISA

**Species Specificity:**  
human, mouse

## Product Information

67261-1-PBS targets LAMC3-Specific as part of a matched antibody pair:

MP51059-1: 67261-1-PBS capture and 67261-2-PBS detection (validated in Cytometric bead array)

Unconjugated mouse monoclonal antibody pair in PBS only (BSA and azide free) storage buffer at a concentration of 1 mg/mL, ready for conjugation.

This conjugation ready format makes antibodies ideal for use in many applications including: ELISAs, multiplex assays requiring matched pairs, mass cytometry, and multiplex imaging applications. Antibody use should be optimized by the end user for each application and assay.

## Storage

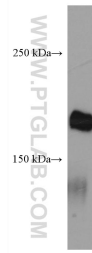
**Storage:**  
Store at -80°C.

**Storage Buffer:**  
PBS Only

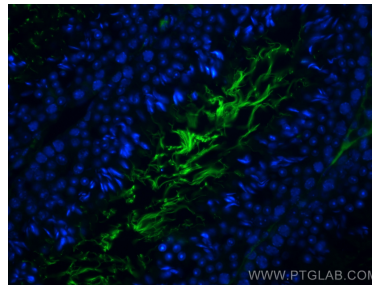
For technical support and original validation data for this product please contact:  
T: 1 (888) 4PTGLAB (1-888-478-4522) (toll free in USA), or 1(312) 455-8498 (outside USA)      E: proteintech@ptglab.com  
W: ptglab.com

**This product is exclusively available under Proteintech Group brand and is not available to purchase from any other manufacturer.**

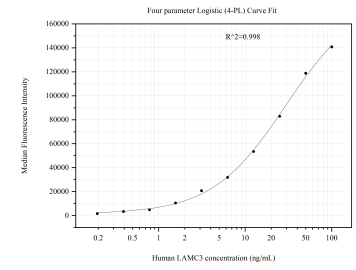
## Selected Validation Data



human testis tissue were subjected to SDS PAGE followed by western blot with 67261-1-Ig (LAMC3-Specific antibody) at dilution of 1:1500 incubated at room temperature for 1.5 hours. This data was developed using the same antibody clone with 67261-1-PBS in a different storage buffer formulation.



Immunofluorescent analysis of (4% PFA) fixed mouse testis tissue using LAMC3-Specific antibody (67261-1-Ig, Clone: 4B8C5) at dilution of 1:400 and CoraLite®488-Conjugated AffiniPure Goat Anti-Mouse IgG(H+L). This data was developed using the same antibody clone with 67261-1-PBS in a different storage buffer formulation.



Cytometric bead array standard curve of MP51059-1, LAMC3-Specific Monoclonal Matched Antibody Pair, PBS Only. Capture antibody: 67261-1-PBS. Detection antibody: 67261-2-PBS. Standard: Ag19568. Range: 0.195-100 ng/mL.