

For Research Use Only

# BCR Monoclonal antibody, PBS Only

Catalog Number: 67260-1-PBS



## Basic Information

<b>Catalog Number:</b> 67260-1-PBS	<b>GenBank Accession Number:</b> BC066122	<b>Purification Method:</b> Protein A purification
<b>Size:</b> 100ug , Concentration: 1mg/ml by Nanodrop;	<b>GeneID (NCBI):</b> 613	<b>CloneNo.:</b> 2C2E3
<b>Source:</b> Mouse	<b>UNIPROT ID:</b> P11274	
<b>Isotype:</b> IgG2b	<b>Full Name:</b> breakpoint cluster region	
<b>Immunogen Catalog Number:</b> AG28953	<b>Calculated MW:</b> 143 kDa	
	<b>Observed MW:</b> 150-160 kDa	

## Applications

**Tested Applications:**  
WB, Indirect ELISA

**Species Specificity:**  
Human, rat

## Background Information

The Bcr gene, mapping on chromosome22, was originally identified by its presence in the chimeric Bcr-Abl oncogene. The Bcr gene encodes for the break point cluster region protein(Bcr). Although the BCR-ABL fusion protein has been extensively studied, the function of the normal BCR gene product is not clear. The protein has serine/threonine kinase activity and is a GTPase-activating protein for RAC1 and CDC42. A chromosomal aberration involving BCR has been found in patients with chronic myeloid leukemia.

## Storage

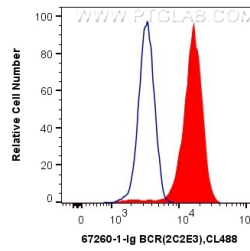
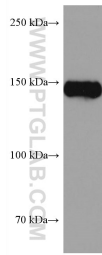
**Storage:**  
Store at -80°C.

**Storage Buffer:**  
PBS Only

For technical support and original validation data for this product please contact:  
T: 1 (888) 4PTGLAB (1-888-478-4522) (toll free in USA), or 1(312) 455-8498 (outside USA)      E: proteintech@ptglab.com  
W: ptglab.com

**This product is exclusively available under Proteintech Group brand and is not available to purchase from any other manufacturer.**

## Selected Validation Data



Jurkat cells were subjected to SDS PAGE followed by western blot with 67260-1-Ig (BCR antibody) at dilution of 1:5000 incubated at room temperature for 1.5 hours. This data was developed using the same antibody clone with 67260-1-PBS in a different storage buffer formulation.

$1 \times 10^6$  K-562 cells were intracellularly stained with 0.4 ug Anti-Human BCR (67260-1-Ig, Clone:2C2E3) and CoraLite®488-Conjugated AffiniPure Goat Anti-Mouse IgG(H+L) at dilution 1:1000 (red), or 0.4 ug Mouse IgG2b Isotype Control (66360-3-Ig, Clone: K11B8C4B5) (blue). Cells were fixed with 4% PFA and permeabilized with Flow Cytometry Perm Buffer (PF00011-C). This data was developed using the same antibody clone with 67260-1-PBS in a different storage buffer