

For Research Use Only

P glycoprotein Monoclonal antibody, PBS Only



Catalog Number: 67258-2-PBS

Basic Information

Catalog Number:

67258-2-PBS

Size:

100ug, Concentration: 1 mg/ml by
Nanodrop;

Source:

Mouse

Isotype:

IgG1

Immunogen Catalog Number:

AG17811

GenBank Accession Number:

BC130424

GeneID (NCBI):

5243

UNIPROT ID:

P08183

Full Name:

ATP-binding cassette, sub-family B
(MDR/TAP), member 1

Calculated MW:

1280 aa, 142 kDa

Observed MW:

130-150 kDa

Purification Method:

Protein G purification

CloneNo.:

1G6C2

Applications

Tested Applications:

WB, IHC, Indirect ELISA

Species Specificity:

Human

Background Information

ABCB1 (also known as P-gp/ P-glycoprotein, MDR1/multidrug-resistance 1) is a plasma membrane protein first discovered in multidrug resistant tumor cells. ABCB1 can extrude a large number of medically relevant compounds from cells and causes drug resistance. ABCB1 is expressed in a variety of human cancers as well as normal tissues including brain, and placenta. Overexpression of ABCB1 correlates with a negative prognosis in several types of cancer. For optimal WB detection, we recommend to avoid boiling the sample after lysis.

Storage

Storage:

Store at -80°C.

Storage Buffer:

PBS Only

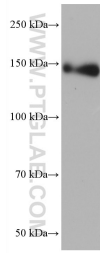
For technical support and original validation data for this product please contact:

T: 1 (888) 4PTGLAB (1-888-478-4522) (toll free
in USA), or 1(312) 455-8498 (outside USA)

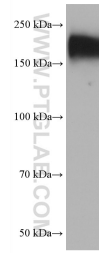
E: proteintech@ptglab.com
W: ptglab.com

This product is exclusively available under Proteintech Group brand and is not available to purchase from any other manufacturer.

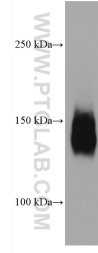
Selected Validation Data



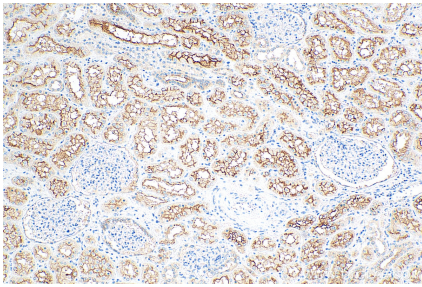
unboiled HeLa cells were subjected to SDS PAGE followed by western blot with 67258-2-Ig (ABCB1 antibody) at dilution of 1:3000 incubated at room temperature for 1.5 hours. This data was developed using the same antibody clone with 67258-2-PBS in a different storage buffer formulation.



SH-SY5Y cells were subjected to SDS PAGE followed by western blot with 67258-2-Ig (ABCB1 antibody) at dilution of 1:3000 incubated at room temperature for 1.5 hours. This data was developed using the same antibody clone with 67258-2-PBS in a different storage buffer formulation.



unboiled HepG2 cells were subjected to SDS PAGE followed by western blot with 67258-2-Ig (ABCB1 antibody) at dilution of 1:10000 incubated at room temperature for 1.5 hours. This data was developed using the same antibody clone with 67258-2-PBS in a different storage buffer formulation.



Immunohistochemical analysis of paraffin-embedded human kidney tissue slide using 67258-2-Ig (ABCB1 antibody) at dilution of 1:2000 (under 10x lens). Heat mediated antigen retrieval with Tris-EDTA buffer (pH 9.0). This data was developed using the same antibody clone with 67258-2-PBS in a different storage buffer formulation.