

For Research Use Only

EIF5A Monoclonal antibody, PBS Only (Detector)

Catalog Number: 67214-3-PBS



Basic Information

Catalog Number: 67214-3-PBS	GenBank Accession Number: BC001832	Purification Method: Protein G Magarose purification
Size: 100ug , Concentration: 1 mg/ml by Nanodrop;	GeneID (NCBI): 1984	CloneNo.: 1D6C11
Source: Mouse	UNIPROT ID: P63241	
Isotype: IgG1	Full Name: eukaryotic translation initiation factor 5A	
Immunogen Catalog Number: AG28588	Calculated MW: 18 kDa	

Applications

Tested Applications:
Cytometric bead array, Sandwich ELISA, Indirect ELISA, Sample test

Species Specificity:
human

Product Information

67214-3-PBS targets EIF5A as part of a matched antibody pair:

MP50372-1: 67214-2-PBS capture and 67214-3-PBS detection (validated in Cytometric bead array, Sandwich ELISA)

Unconjugated mouse monoclonal antibody pair in PBS only (BSA and azide free) storage buffer at a concentration of 1 mg/mL, ready for conjugation.

This conjugation ready format makes antibodies ideal for use in many applications including: ELISAs, multiplex assays requiring matched pairs, mass cytometry, and multiplex imaging applications. Antibody use should be optimized by the end user for each application and assay.

Storage

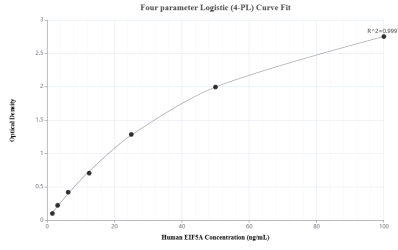
Storage:
Store at -80°C.

Storage Buffer:
PBS Only

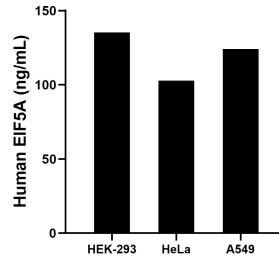
For technical support and original validation data for this product please contact:
T: 1 (888) 4PTGLAB (1-888-478-4522) (toll free in USA), or 1(312) 455-8498 (outside USA) E: proteintech@ptglab.com
W: ptglab.com

This product is exclusively available under Proteintech Group brand and is not available to purchase from any other manufacturer.

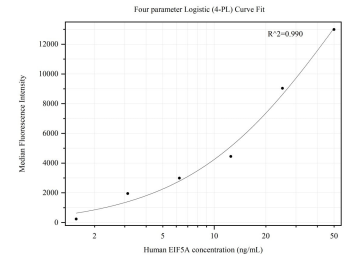
Selected Validation Data



Sandwich ELISA standard curve of MP50372-1, Human EIF5A Monoclonal Matched Antibody Pair - PBS only. 67214-2-PBS was coated to a plate as the capture antibody and incubated with serial dilutions of standard Ag1849. 67214-3-PBS was HRP conjugated as the detection antibody. Range: 1.56-100 ng/mL



The mean EIF5A concentration was determined to be 135.22 ng/mL in HEK-293 cell extract based on a 2.2 mg/mL extract load, 102.87 ng/mL in HeLa cell extract based on a 1.8 mg/mL extract load and 124.18 ng/mL in A549 cell extract based on a 3.1 mg/mL extract load.



Cytometric bead array standard curve of MP50372-1, EIF5A Monoclonal Matched Antibody Pair, PBS Only. Capture antibody: 67214-2-PBS. Detection antibody: 67214-3-PBS. Standard: Ag1849. Range: 1.563-50 ng/mL