

For Research Use Only

CDC42 Monoclonal antibody, PBS Only

Catalog Number: 67212-1-PBS



Basic Information

Catalog Number:

67212-1-PBS

Size:

100ug, Concentration: 1 mg/ml by Nanodrop;

Source:

Mouse

Isotype:

IgM

Immunogen Catalog Number:

AG28550

GenBank Accession Number:

BC002711

GeneID (NCBI):

998

UNIPROT ID:

P60953

Full Name:

cell division cycle 42 (GTP binding protein, 25kDa)

Calculated MW:

21 kDa

Observed MW:

21 kDa

Purification Method:

Caprylic acid/ammonium sulfate precipitation

CloneNo.:

2G5E8

Applications

Tested Applications:

WB, Indirect ELISA

Species Specificity:

human, mouse, rat

Background Information

Cdc42, the human homologue of the cell division cycle 42 of *Saccharomyces cerevisiae*, belongs to the Rho/Rac subfamily of Ras-like GTPases. It acts as molecular switches to regulate numerous cellular responses including the organization of the actin cytoskeleton, gene transcription, cell cycle progression, and membrane trafficking

Storage

Storage:

Store at -80°C.

Storage Buffer:

PBS Only

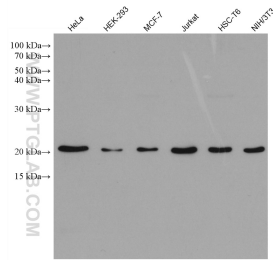
For technical support and original validation data for this product please contact:

T: 1 (888) 4PTGLAB (1-888-478-4522) (toll free in USA), or 1(312) 455-8498 (outside USA)

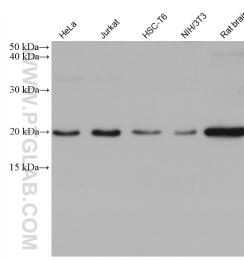
E: proteintech@ptglab.com
W: ptglab.com

This product is exclusively available under Proteintech Group brand and is not available to purchase from any other manufacturer.

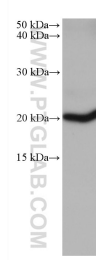
Selected Validation Data



Various lysates were subjected to SDS PAGE followed by western blot with 67212-1-Ig (CDC42 antibody) at dilution of 1:10000 incubated at room temperature for 1.5 hours. This data was developed using the same antibody clone with 67212-1-PBS in a different storage buffer formulation.



Various lysates were subjected to SDS PAGE followed by western blot with 67212-1-Ig (CDC42 antibody) at dilution of 1:5000 incubated at room temperature for 1.5 hours. This data was developed using the same antibody clone with 67212-1-PBS in a different storage buffer formulation.



mouse cerebellum tissue were subjected to SDS PAGE followed by western blot with 67212-1-Ig (CDC42 antibody) at dilution of 1:5000 incubated at room temperature for 1.5 hours. This data was developed using the same antibody clone with 67212-1-PBS in a different storage buffer formulation.