

For Research Use Only

# TMEM111 Monoclonal antibody, PBS Only



Catalog Number: 67205-1-PBS

Featured Product

## Basic Information

Catalog Number:

67205-1-PBS

Size:

100ug, Concentration: 1mg/ml by Nanodrop;

Source:

Mouse

Isotype:

IgG1

Immunogen Catalog Number:

AG18365

GenBank Accession Number:

BC022807

GeneID (NCBI):

55831

UNIPROT ID:

Q9POL2

Full Name:

transmembrane protein 111

Calculated MW:

261 aa, 30 kDa

Observed MW:

30 kDa

Purification Method:

Protein A purification

CloneNo.:

2F8G5

## Applications

Tested Applications:

WB, IF, IHC, Indirect ELISA

Species Specificity:

Human, mouse, rat, pig

## Background Information

TMEM111, also names as EMC3, is part of the endoplasmic reticulum-associated secretory pathway (PMID: 19797678). TMEM111 was required for murine pulmonary surfactant synthesis and lung function at birth (PMID: 29083321). It can be detect a band of 30 kDa.

## Storage

Storage:

Store at -80°C.

Storage Buffer:

PBS Only

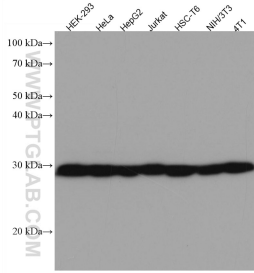
For technical support and original validation data for this product please contact:

T: 1 (888) 4PTGLAB (1-888-478-4522) (toll free in USA), or 1(312) 455-8498 (outside USA)

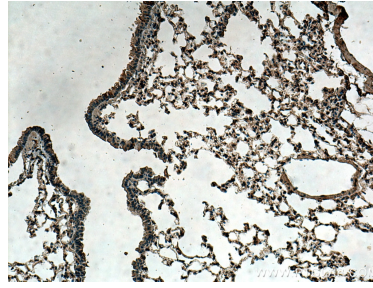
E: [proteintech@ptglab.com](mailto:proteintech@ptglab.com)  
W: [ptglab.com](http://ptglab.com)

This product is exclusively available under Proteintech Group brand and is not available to purchase from any other manufacturer.

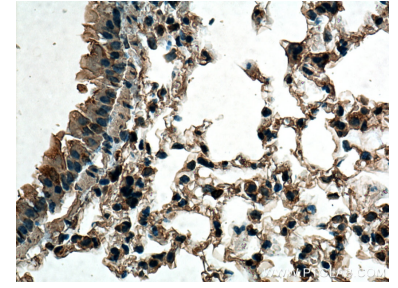
## Selected Validation Data



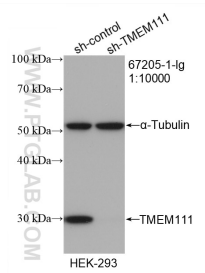
Various lysates were subjected to SDS PAGE followed by western blot with 67205-1-Ig (TMEM111 antibody) at dilution of 1:5000 incubated at room temperature for 1.5 hours. This data was developed using the same antibody clone with 67205-1-PBS in a different storage buffer formulation.



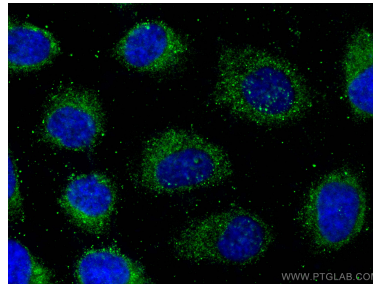
Immunohistochemical analysis of paraffin-embedded mouse lung tissue slide using 67205-1-Ig (TMEM111 antibody) at dilution of 1:500 (under 10x lens). Heat mediated antigen retrieval with Tris-EDTA buffer (pH 9.0). This data was developed using the same antibody clone with 67205-1-PBS in a different storage buffer formulation.



Immunohistochemical analysis of paraffin-embedded mouse lung tissue slide using 67205-1-Ig (TMEM111 antibody) at dilution of 1:500 (under 40x lens). Heat mediated antigen retrieval with Tris-EDTA buffer (pH 9.0). This data was developed using the same antibody clone with 67205-1-PBS in a different storage buffer formulation.



WB result of TMEM111 antibody (67205-1-Ig; 1:10000; incubated at room temperature for 1.5 hours) with sh-Control and sh-TMEM111 transfected HEK-293 cells. This data was developed using the same antibody clone with 67205-1-PBS in a different storage buffer formulation.



Immunofluorescent analysis of (-20°C Methanol) fixed A431 cells using TMEM111 antibody (67205-1-Ig, Clone: 2F8G5) at dilution of 1:400 and CoralLite® 488-Conjugated AffiniPure Goat Anti-Mouse IgG(H+L) (SA00013-1). This data was developed using the same antibody clone with 67205-1-PBS in a different storage buffer formulation.