

For Research Use Only

# YES1 Monoclonal antibody, PBS Only



Catalog Number: 67196-1-PBS

Featured Product

## Basic Information

**Catalog Number:**

67196-1-PBS

**Size:**

100ug , Concentration: 1 mg/ml by Nanodrop;

**Source:**

Mouse

**Isotype:**

IgG2a

**Immunogen Catalog Number:**

AG5016

**GenBank Accession Number:**

BC048960

**GeneID (NCBI):**

7525

**UNIPROT ID:**

P07947

**Full Name:**

v-yes-1 Yamaguchi sarcoma viral oncogene homolog 1

**Calculated MW:**

61 kDa

**Observed MW:**

62 kDa

**Purification Method:**

Protein A purification

**CloneNo.:**

1A12E7

## Applications

**Tested Applications:**

WB, IHC, Indirect ELISA

**Species Specificity:**

Human, rat

## Background Information

YES1, also named as p61-Yes and YES, belongs to the protein kinase superfamily, Tyr protein kinase family and SRC subfamily. It promotes infectivity of Neisseria gonorrhoeae in epithelial cells by phosphorylating MCP/CD46. YES1 catalyzes the reaction:  $ATP + a \text{ [protein]-L-tyrosine} = ADP + a \text{ [protein]-L-tyrosine phosphate}$ .

## Storage

**Storage:**

Store at -80°C.

**Storage Buffer:**

PBS Only

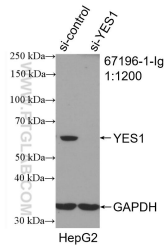
For technical support and original validation data for this product please contact:

T: 1 (888) 4PTGLAB (1-888-478-4522) (toll free in USA), or 1(312) 455-8498 (outside USA)

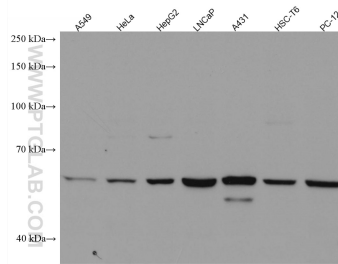
E: [proteintech@ptglab.com](mailto:proteintech@ptglab.com)  
W: [ptglab.com](http://ptglab.com)

This product is exclusively available under Proteintech Group brand and is not available to purchase from any other manufacturer.

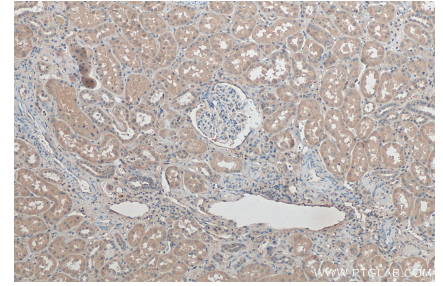
## Selected Validation Data



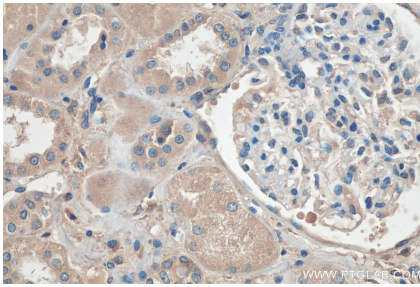
WB result of YES1 antibody (67196-1-Ig; 1:1200; incubated at room temperature for 1.5 hours) with sh-Control and sh-YES1 transfected HepG2 cells. This data was developed using the same antibody clone with 67196-1-PBS in a different storage buffer formulation.



Various lysates were subjected to SDS PAGE followed by western blot with 67196-1-Ig (YES1 antibody) at dilution of 1:2000 incubated at room temperature for 1.5 hours. This data was developed using the same antibody clone with 67196-1-PBS in a different storage buffer formulation.



Immunohistochemical analysis of paraffin-embedded human kidney tissue slide using 67196-1-Ig (YES1 antibody) at dilution of 1:200 (under 10x lens). Heat mediated antigen retrieval with Tris-EDTA buffer (pH 9.0). This data was developed using the same antibody clone with 67196-1-PBS in a different storage buffer formulation.



Immunohistochemical analysis of paraffin-embedded human kidney tissue slide using 67196-1-Ig (YES1 antibody) at dilution of 1:200 (under 40x lens). Heat mediated antigen retrieval with Tris-EDTA buffer (pH 9.0). This data was developed using the same antibody clone with 67196-1-PBS in a different storage buffer formulation.