

For Research Use Only

# DMC1 Monoclonal antibody, PBS Only

Catalog Number: 67176-1-PBS



## Basic Information

<b>Catalog Number:</b> 67176-1-PBS	<b>GenBank Accession Number:</b> BC035658	<b>Purification Method:</b> Protein A purification
<b>Size:</b> 100ug, Concentration: 1mg/ml by Nanodrop;	<b>GeneID (NCBI):</b> 11144	<b>CloneNo.:</b> 2D5C9
<b>Source:</b> Mouse	<b>UNIPROT ID:</b> Q14565	
<b>Isotype:</b> IgG2a	<b>Full Name:</b> DMC1 dosage suppressor of mck1 homolog, meiosis-specific homologous recombination (yeast)	
<b>Immunogen Catalog Number:</b> AG6951	<b>Calculated MW:</b> 165 aa, 18 kDa, 38 kDa	
	<b>Observed MW:</b> 37 kDa	

## Applications

**Tested Applications:**  
WB, IHC, IF-P, IP, Indirect ELISA

**Species Specificity:**  
human, mouse, rat

## Storage

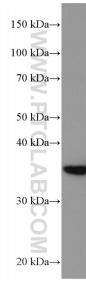
**Storage:**  
Store at -80°C.

**Storage Buffer:**  
PBS Only

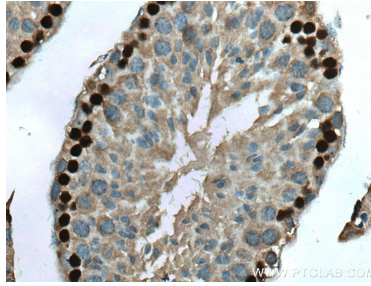
For technical support and original validation data for this product please contact:  
T: 1 (888) 4PTGLAB (1-888-478-4522) (toll free in USA), or 1(312) 455-8498 (outside USA)      E: proteintech@ptglab.com  
W: ptglab.com

This product is exclusively available under Proteintech Group brand and is not available to purchase from any other manufacturer.

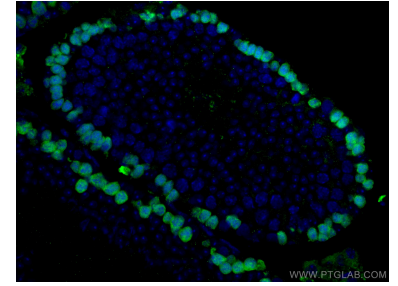
## Selected Validation Data



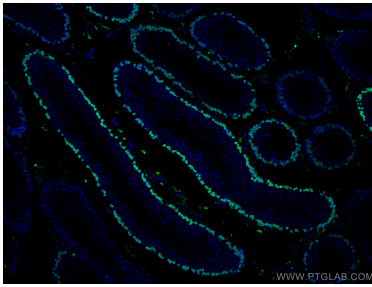
HeLa cells were subjected to SDS PAGE followed by western blot with 67176-1-Ig (DMC1 antibody) at dilution of 1:10000 incubated at room temperature for 1.5 hours. This data was developed using the same antibody clone with 67176-1-PBS in a different storage buffer formulation.



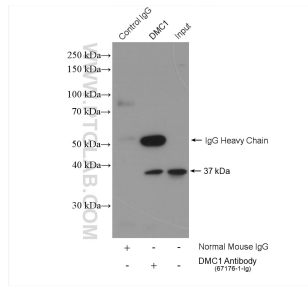
Immunohistochemical analysis of paraffin-embedded mouse testis tissue slide using 67176-1-Ig (DMC1 antibody) at dilution of 1:1000 (under 40x lens). Heat mediated antigen retrieval with Tris-EDTA buffer (pH 9.0). This data was developed using the same antibody clone with 67176-1-PBS in a different storage buffer formulation.



Immunofluorescent analysis of (4% PFA) fixed mouse testis tissue using DMC1 antibody (67176-1-Ig, Clone: 2D5C9) at dilution of 1:400 and CoraLite®488-Conjugated AffiniPure Goat Anti-Mouse IgG(H+L). DAPI (blue). This data was developed using the same antibody clone with 67176-1-PBS in a different storage buffer formulation.



Immunofluorescent analysis of (4% PFA) fixed mouse testis tissue using DMC1 antibody (67176-1-Ig, Clone: 2D5C9) at dilution of 1:400 and CoraLite®488-Conjugated AffiniPure Goat Anti-Mouse IgG(H+L). DAPI (blue). This data was developed using the same antibody clone with 67176-1-PBS in a different storage buffer formulation.



IP result of anti-DMC1 (IP:67176-1-Ig, 4ug; Detection:67176-1-Ig 1:1000) with mouse testis tissue lysate 2040 ug. This data was developed using the same antibody clone with 67176-1-PBS in a different storage buffer formulation.