

For Research Use Only

RAP1B Monoclonal antibody, PBS Only



Catalog Number: 67174-1-PBS

Basic Information

Catalog Number: 67174-1-PBS	GenBank Accession Number: BC000176	Purification Method: Protein A purification
Size: 100ug , Concentration: 1mg/ml by Nanodrop;	GeneID (NCBI): 5908	CloneNo.: 2E7G11
Source: Mouse	UNIPROT ID: P61224	
Isotype: IgG1	Full Name: RAP1B, member of RAS oncogene family	
Immunogen Catalog Number: AG29212	Calculated MW: 21 kDa	
	Observed MW: 21 kDa	

Applications

Tested Applications:
WB, IF, IHC, Indirect ELISA

Species Specificity:
Human, mouse, rat

Storage

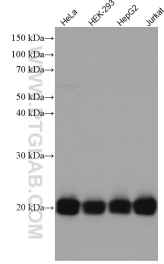
Storage:
Store at -80°C.

Storage Buffer:
PBS Only

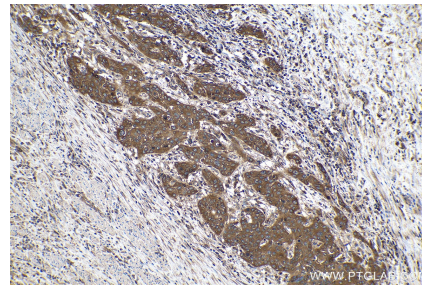
For technical support and original validation data for this product please contact:
T: 1 (888) 4PTGLAB (1-888-478-4522) (toll free in USA), or 1(312) 455-8498 (outside USA) E: proteintech@ptglab.com
W: ptglab.com

This product is exclusively available under Proteintech Group brand and is not available to purchase from any other manufacturer.

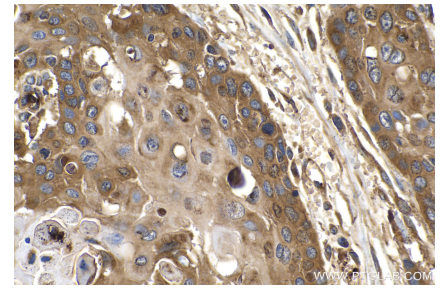
Selected Validation Data



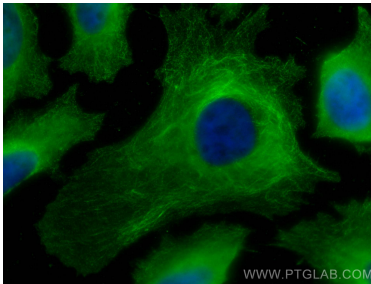
Various lysates were subjected to SDS PAGE followed by western blot with 67174-1-Ig (RAP1B antibody) at dilution of 1:5000 incubated at room temperature for 1.5 hours. This data was developed using the same antibody clone with 67174-1-PBS in a different storage buffer formulation.



Immunohistochemical analysis of paraffin-embedded human oesophagus cancer tissue slide using 67174-1-Ig (RAP1B antibody) at dilution of 1:1 (under 10x lens). Heat mediated antigen retrieval with Tris-EDTA buffer (pH 9.0). This data was developed using the same antibody clone with 67174-1-PBS in a different storage buffer formulation.



Immunohistochemical analysis of paraffin-embedded human oesophagus cancer tissue slide using 67174-1-Ig (RAP1B antibody) at dilution of 1:1 (under 40x lens). Heat mediated antigen retrieval with Tris-EDTA buffer (pH 9.0). This data was developed using the same antibody clone with 67174-1-PBS in a different storage buffer formulation.



Immunofluorescent analysis of (-20°C Methanol) fixed HeLa cells using RAP1B antibody (67174-1-Ig, Clone: 2E7G11) at dilution of 1:400 and CoraLite®488-Conjugated AffiniPure Goat Anti-Mouse IgG(H+L). This data was developed using the same antibody clone with 67174-1-PBS in a different storage buffer formulation.