

For Research Use Only

COQ6 Monoclonal antibody, PBS Only (Capture)

Catalog Number: 67162-1-PBS



Basic Information

Catalog Number: 67162-1-PBS	GenBank Accession Number: BC014181	Purification Method: Protein G purification
Size: 100ug, Concentration: 1mg/ml by Nanodrop;	GeneID (NCBI): 51004	CloneNo.: 2F5B1
Source: Mouse	UNIPROT ID: Q9Y2Z9	
Isotype: IgG1	Full Name: coenzyme Q6 homolog, monooxygenase (S. cerevisiae)	
Immunogen Catalog Number: AG28991	Calculated MW: 468 aa, 51 kDa	
	Observed MW: 51 kDa	

Applications

Tested Applications:
WB, IHC, Cytometric bead array, Indirect ELISA

Species Specificity:
human, mouse, rat, pig

Product Information

67162-1-PBS targets COQ6 as part of a matched antibody pair:

MP50616-1: 67162-1-PBS capture and 67162-2-PBS detection (validated in Cytometric bead array)

Unconjugated mouse monoclonal antibody pair in PBS only (BSA and azide free) storage buffer at a concentration of 1 mg/mL, ready for conjugation.

This conjugation ready format makes antibodies ideal for use in many applications including: ELISAs, multiplex assays requiring matched pairs, mass cytometry, and multiplex imaging applications. Antibody use should be optimized by the end user for each application and assay.

Storage

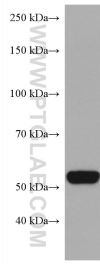
Storage:
Store at -80°C.

Storage Buffer:
PBS Only

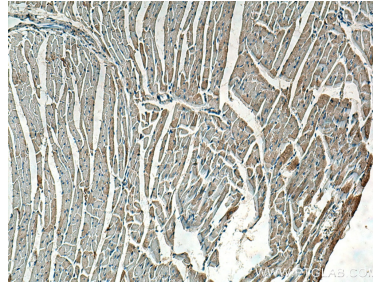
For technical support and original validation data for this product please contact:
T: 1 (888) 4PTGLAB (1-888-478-4522) (toll free in USA), or 1(312) 455-8498 (outside USA) E: proteintech@ptglab.com
W: ptglab.com

This product is exclusively available under Proteintech Group brand and is not available to purchase from any other manufacturer.

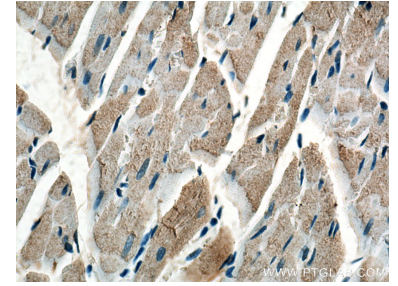
Selected Validation Data



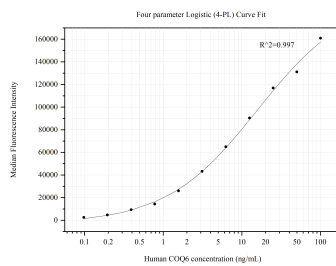
human heart tissue were subjected to SDS PAGE followed by western blot with 67162-1-Ig (COQ6 antibody) at dilution of 1:5000 incubated at room temperature for 1.5 hours. This data was developed using the same antibody clone with 67162-1-PBS in a different storage buffer formulation.



Immunohistochemical analysis of paraffin-embedded rat heart tissue slide using 67162-1-Ig (COQ6 antibody) at dilution of 1:500 (under 10x lens). Heat mediated antigen retrieval with Tris-EDTA buffer (pH 9.0). This data was developed using the same antibody clone with 67162-1-PBS in a different storage buffer formulation.



Immunohistochemical analysis of paraffin-embedded rat heart tissue slide using 67162-1-Ig (COQ6 antibody) at dilution of 1:500 (under 40x lens). Heat mediated antigen retrieval with Tris-EDTA buffer (pH 9.0). This data was developed using the same antibody clone with 67162-1-PBS in a different storage buffer formulation.



Cytometric bead array standard curve of MP50616-1, COQ6 Monoclonal Matched Antibody Pair, PBS Only. Capture antibody: 67162-1-PBS. Detection antibody: 67162-2-PBS. Standard: Ag28991. Range: 0.098-100 ng/mL.