

For Research Use Only

CDC25B Monoclonal antibody, PBS Only

Catalog Number: 67145-1-PBS



Basic Information

Catalog Number: 67145-1-PBS	GenBank Accession Number: BC006395	Purification Method: Protein A purification
Size: 100ug , Concentration: 1mg/ml by Nanodrop;	GeneID (NCBI): 994	CloneNo.: 1H3A4
Source: Mouse	UNIPROT ID: P30305	
Isotype: IgG2b	Full Name: cell division cycle 25 homolog B (S. pombe)	
Immunogen Catalog Number: AG27193	Calculated MW: 65 kDa	
	Observed MW: 69 kDa	

Applications

Tested Applications:
WB, IHC, IF/ICC, Indirect ELISA

Species Specificity:
human, mouse

Background Information

CDC25B, also named as CDC25HU2, belongs to the MPI phosphatase family. It is a tyrosine protein phosphatase which functions as a dosage-dependent inducer of mitotic progression. CDC25B directly dephosphorylates CDK1 and stimulates its kinase activity. The three isoforms seem to have a different level of activity.

Storage

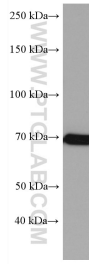
Storage:
Store at -80°C.

Storage Buffer:
PBS Only

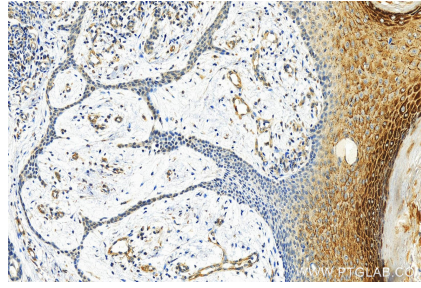
For technical support and original validation data for this product please contact:
T: 1 (888) 4PTGLAB (1-888-478-4522) (toll free in USA), or 1(312) 455-8498 (outside USA) E: proteintech@ptglab.com
W: ptglab.com

This product is exclusively available under Proteintech Group brand and is not available to purchase from any other manufacturer.

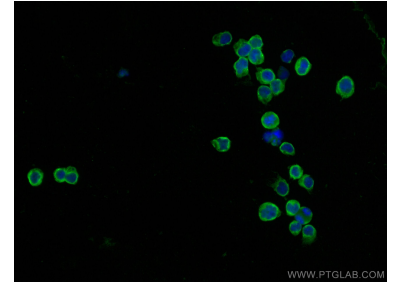
Selected Validation Data



Sp2/0 cells were subjected to SDS PAGE followed by western blot with 67145-1-Ig (CDC25B antibody) at dilution of 1:10000 incubated at room temperature for 1.5 hours. This data was developed using the same antibody clone with 67145-1-PBS in a different storage buffer formulation.



Immunohistochemical analysis of paraffin-embedded skin cancer slide using 67145-1-Ig (CDC25B antibody) at dilution of 1:2000 (under 20x lens). Heat mediated antigen retrieval with Tris-EDTA buffer (pH 9.0). This data was developed using the same antibody clone with 67145-1-PBS in a different storage buffer formulation.



Immunofluorescent analysis of (4% PFA) fixed Jurkat cells using CDC25B antibody (67145-1-Ig, Clone: 1H3A4) at dilution of 1:400 and CoraLite®488-Conjugated AffiniPure Goat Anti-Mouse IgG(H+L). This data was developed using the same antibody clone with 67145-1-PBS in a different storage buffer formulation.