

For Research Use Only

IRF8 Monoclonal antibody, PBS Only

Catalog Number: 67142-1-PBS



Basic Information

Catalog Number: 67142-1-PBS	GenBank Accession Number: BC126247	Purification Method: Protein A purification
Size: 100ug, Concentration: 1 mg/ml by Nanodrop;	GeneID (NCBI): 3394	CloneNo.: 3A10A4
Source: Mouse	UNIPROT ID: Q02556	
Isotype: IgG2b	Full Name: ICSBP1	
Immunogen Catalog Number: AG19909	Calculated MW: 426 aa, 48 kDa	
	Observed MW: 48 kDa	

Applications

Tested Applications:
WB, IF, ELISA

Species Specificity:
Human

Background Information

IRF8 also named as ICSBP1, is a transcription factor of the IFN regulatory factor (IRF) family. The IRF family proteins bind to the IFN-stimulated response element (ISRE) and regulate expression of genes stimulated by type I IFNs, namely IFN-alpha and IFN-beta. IRF family proteins also control expression of IFN-alpha and IFN-beta-regulated genes that are induced by viral infection. IRF8 specifically binds to the upstream regulatory region of type I IFN and IFN-inducible MHC class I genes (the IFN consensus sequence (ICS)). It plays a negative regulatory role in cells of the immune system. It is predominantly in lymphoid tissues.

Storage

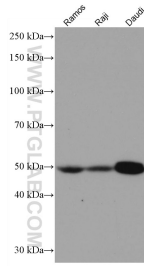
Storage:
Store at -80°C.

Storage Buffer:
PBS only

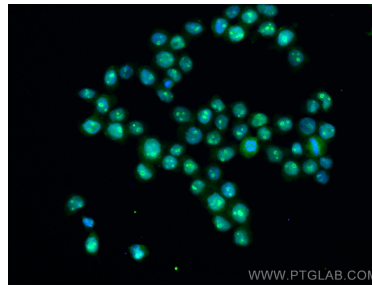
For technical support and original validation data for this product please contact:
T: 1 (888) 4PTGLAB (1-888-478-4522) (toll free in USA), or 1(312) 455-8498 (outside USA) E: proteintech@ptglab.com
W: ptglab.com

This product is exclusively available under Proteintech Group brand and is not available to purchase from any other manufacturer.

Selected Validation Data



Various lysates were subjected to SDS PAGE followed by western blot with 67142-1-Ig (IRF8 antibody) at dilution of 1:3000 incubated at room temperature for 1.5 hours. This data was developed using the same antibody clone with 67142-1-PBS in a different storage buffer formulation.



Immunofluorescent analysis of (4% PFA) fixed THP-1 cells using IRF8 antibody (67142-1-Ig, Clone: 3A10A4) at dilution of 1:800 and CoraLite®488-Conjugated AffiniPure Goat Anti-Mouse IgG(H+L). This data was developed using the same antibody clone with 67142-1-PBS in a different storage buffer formulation.