

For Research Use Only

TRIM21 Monoclonal antibody, PBS Only (Capture)



Catalog Number: 67136-1-PBS

Featured Product

Basic Information

Catalog Number: 67136-1-PBS	GenBank Accession Number: BC010861	Purification Method: Protein A purification
Size: 100ug , Concentration: 1mg/ml by Nanodrop;	GeneID (NCBI): 6737	CloneNo.: 1E8B9
Source: Mouse	UNIPROT ID: P19474	
Isotype: IgG1	Full Name: tripartite motif-containing 21	
Immunogen Catalog Number: AG28377	Calculated MW: 475 aa, 54 kDa	
	Observed MW: 52 kDa	

Applications

Tested Applications:
WB, IHC, IF/ICC, Cytometric bead array, Indirect ELISA

Species Specificity:
human, mouse, rat

Product Information

67136-1-PBS targets TRIM21 as part of a matched antibody pair:

MP50371-2: 67136-1-PBS capture and 67136-3-PBS detection (validated in Cytometric bead array)

MP50371-4: 67136-1-PBS capture and 67136-5-PBS detection (validated in Cytometric bead array)

Unconjugated mouse monoclonal antibody pair in PBS only (BSA and azide free) storage buffer at a concentration of 1 mg/mL, ready for conjugation.

This conjugation ready format makes antibodies ideal for use in many applications including: ELISAs, multiplex assays requiring matched pairs, mass cytometry, and multiplex imaging applications. Antibody use should be optimized by the end user for each application and assay.

Background Information

TRIM21 has multiple N-terminal zinc finger motifs (has E3 ligase activity), a central leucine zipper, and a potential N-glycosylation site. TRIM3 is a E3 ubiquitin-protein ligase. It can form a ubiquitin ligase complex with E2 UBE2D2, which function not only for the ubiquitination of USP4 and IKKB but also for its self-ubiquitination. It has a role in the regulation of the cell cycle progression and could enhance the decapping activity of DCP2. It can exist in all mammalian cells as a ribonucleoprotein particle, which composed of a single polypeptide and 1 of 4 small RNA molecules. TRIM21 exists various isoforms and range molecular weight of isoforms is about 42-45kDa and 49-54 kDa.

Storage

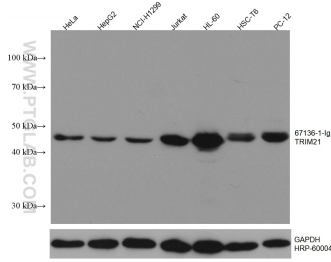
Storage:
Store at -80°C.

Storage Buffer:
PBS Only

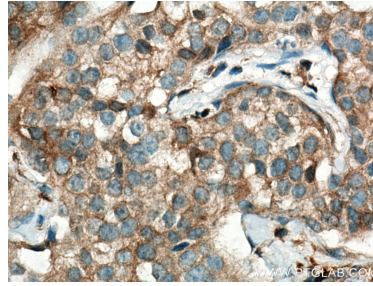
For technical support and original validation data for this product please contact:
T: 1 (888) 4PTGLAB (1-888-478-4522) (toll free in USA), or 1(312) 455-8498 (outside USA)
E: proteintech@ptglab.com
W: ptglab.com

This product is exclusively available under Proteintech Group brand and is not available to purchase from any other manufacturer.

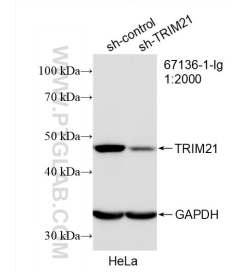
Selected Validation Data



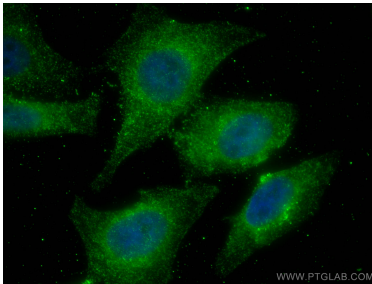
Various lysates were subjected to SDS PAGE followed by western blot with 67136-1-Ig (TRIM21 antibody) at dilution of 1:5000 incubated at room temperature for 1.5 hours. The membrane was stripped and reblotted with HRP-conjugated GAPDH Monoclonal antibody (HRP-60004) as loading control. This data was developed using the same antibody clone with 67136-1-PBS in a different storage buffer formulation.



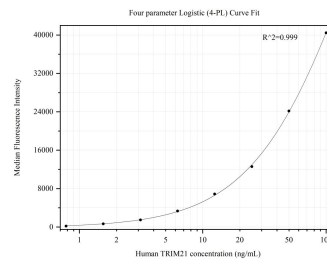
Immunohistochemical analysis of paraffin-embedded human breast cancer tissue slide using 67136-1-Ig (TRIM21 antibody) at dilution of 1:500 (under 40x lens). Heat mediated antigen retrieval with Tris-EDTA buffer (pH 9.0). This data was developed using the same antibody clone with 67136-1-PBS in a different storage buffer formulation.



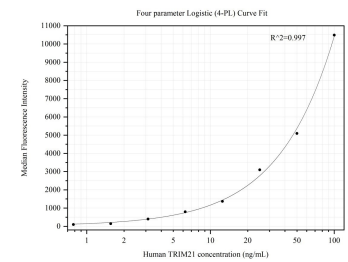
WB result of TRIM21 antibody (67136-1-Ig; 1:2000; incubated at room temperature for 1.5 hours) with sh-Control and sh-TRIM21 transfected HeLa cells. This data was developed using the same antibody clone with 67136-1-PBS in a different storage buffer formulation.



Immunofluorescent analysis of (4% PFA) fixed HepG2 cells using TRIM21 antibody (67136-1-Ig, Clone: 1E8B9) at dilution of 1:800 and CoraLite®488-Conjugated AffiniPure Goat Anti-Mouse IgG(H+L). This data was developed using the same antibody clone with 67136-1-PBS in a different storage buffer formulation.



Cytometric bead array standard curve of MP50371-2, TRIM21 Monoclonal Matched Antibody Pair, PBS Only. Capture antibody: 67136-1-PBS. Detection antibody: 67136-3-PBS. Standard: Ag28377. Range: 0.781-100 ng/mL.



Cytometric bead array standard curve of MP50371-4, TRIM21 Monoclonal Matched Antibody Pair, PBS Only. Capture antibody: 67136-1-PBS. Detection antibody: 67136-5-PBS. Standard: Ag28377. Range: 0.781-100 ng/mL.