

For Research Use Only

# FSHB Monoclonal antibody, PBS Only

Catalog Number: 67131-1-PBS



## Basic Information

<b>Catalog Number:</b> 67131-1-PBS	<b>GenBank Accession Number:</b> BC113488	<b>Purification Method:</b> Protein A purification
<b>Size:</b> 100ug , Concentration: 1 mg/ml by Nanodrop;	<b>GeneID (NCBI):</b> 2488	<b>CloneNo.:</b> 1B10A11
<b>Source:</b> Mouse	<b>UNIPROT ID:</b> P01225	
<b>Isotype:</b> IgG2b	<b>Full Name:</b> follicle stimulating hormone, beta polypeptide	
<b>Immunogen Catalog Number:</b> AG13788	<b>Calculated MW:</b> 129 aa, 15 kDa	

## Applications

**Tested Applications:**  
IF, IHC, Indirect ELISA

**Species Specificity:**  
Human

## Background Information

The FSHB gene encodes the beta subunit of follicle-stimulating hormone (FSH), particularly expressed in gonadotroph cells within the anterior pituitary gland and plays a critical role in the regulation of gonadal function, pubertal maturation and reproductive processes in mammals. The transcription of the FSHB gene is critical for the production of the FSH hormone(PMID:28281143). And FSH is required for ovarian folliculogenesis in females, in males it promotes spermatogenesis in conjunction with testosterone(PMID:11739331). Mutations in FSHB gene would result in infertility both in men and women (PMID: 23766128).

## Storage

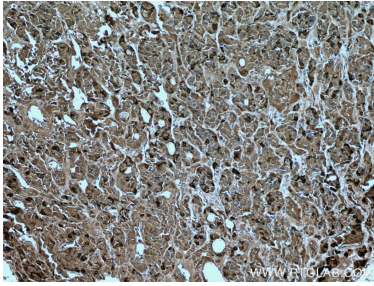
**Storage:**  
Store at -80°C.

**Storage Buffer:**  
PBS Only

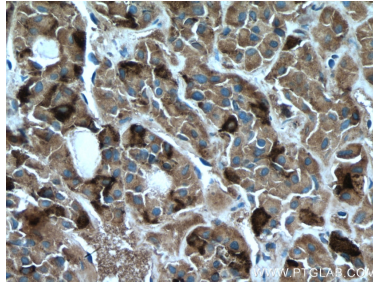
For technical support and original validation data for this product please contact:  
T: 1 (888) 4PTGLAB (1-888-478-4522) (toll free in USA), or 1(312) 455-8498 (outside USA)  
E: [proteintech@ptglab.com](mailto:proteintech@ptglab.com)  
W: [ptglab.com](http://ptglab.com)

This product is exclusively available under Proteintech Group brand and is not available to purchase from any other manufacturer.

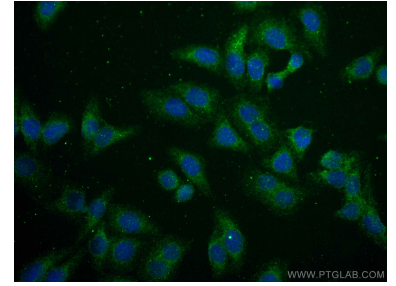
## Selected Validation Data



Immunohistochemical analysis of paraffin-embedded human pituitary tissue slide using 67131-1-Ig (FSHB antibody) at dilution of 1:1000 (under 10x lens. Heat mediated antigen retrieval with Tris-EDTA buffer (pH 9.0). This data was developed using the same antibody clone with 67131-1-PBS in a different storage buffer formulation.



Immunohistochemical analysis of paraffin-embedded human pituitary tissue slide using 67131-1-Ig (FSHB antibody) at dilution of 1:1000 (under 40x lens. Heat mediated antigen retrieval with Tris-EDTA buffer (pH 9.0). This data was developed using the same antibody clone with 67131-1-PBS in a different storage buffer formulation.



Immunofluorescent analysis of (-20°C Ethanol) fixed HepG2 cells using FSHB antibody (67131-1-Ig, Clone: 1B10A11 ) at dilution of 1:400 and CoraLite®488-Conjugated AffiniPure Goat Anti-Mouse IgG(H+L). This data was developed using the same antibody clone with 67131-1-PBS in a different storage buffer formulation.