

For Research Use Only

CYP3A4 Monoclonal antibody, PBS Only (Detector)

Catalog Number: 67110-1-PBS



Basic Information

Catalog Number: 67110-1-PBS	GenBank Accession Number: BC101631	Purification Method: Protein A purification
Size: 100ug, Concentration: 1mg/ml by Nanodrop;	GeneID (NCBI): 1576	CloneNo.: 2F11C4
Source: Mouse	UNIPROT ID: P08684	
Isotype: IgG1	Full Name: cytochrome P450, family 3, subfamily A, polypeptide 4	
Immunogen Catalog Number: AG13074	Calculated MW: 503 aa, 57 kDa	
	Observed MW: 51-57 kDa	

Applications

Tested Applications:
WB, IHC, IF/ICC, IF-P, Cytometric bead array, Indirect
ELISA

Species Specificity:
human, mouse, rat, pig

Product Information

67110-1-PBS targets CYP3A4 as part of a matched antibody pair.

MP50718-4: 67110-6-PBS capture and 67110-1-PBS detection (validated in Cytometric bead array)

Unconjugated mouse monoclonal antibody pair in PBS only (BSA and azide free) storage buffer at a concentration of 1 mg/mL, ready for conjugation.

This conjugation ready format makes antibodies ideal for use in many applications including: ELISAs, multiplex assays requiring matched pairs, mass cytometry, and multiplex imaging applications. Antibody use should be optimized by the end user for each application and assay.

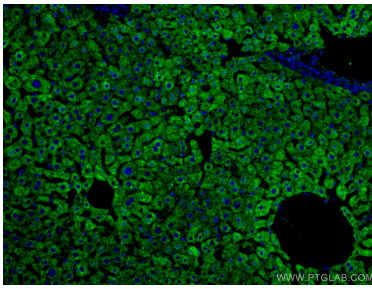
Storage

Storage:
Store at -80°C.
Storage Buffer:
PBS Only

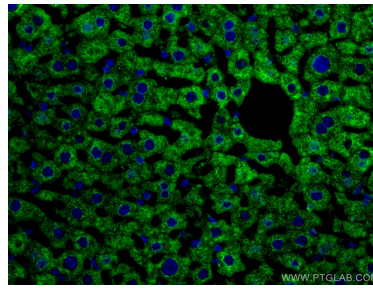
For technical support and original validation data for this product please contact:
T: 1 (888) 4PTGLAB (1-888-478-4522) (toll free in USA), or 1(312) 455-8498 (outside USA) E: proteintech@ptglab.com
W: ptglab.com

This product is exclusively available under Proteintech Group brand and is not available to purchase from any other manufacturer.

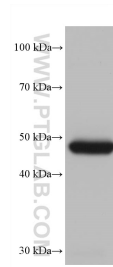
Selected Validation Data



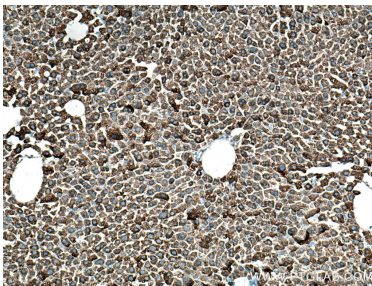
Immunofluorescent analysis of (4% PFA) fixed mouse liver tissue using CYP3A4 antibody (67110-1-Ig, Clone: 2F11C4) at dilution of 1:400 and CoraLite®488-Conjugated AffiniPure Goat Anti-Mouse IgG(H+L). This data was developed using the same antibody clone with 67110-1-PBS in a different storage buffer formulation.



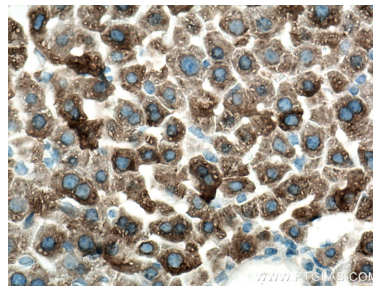
Immunofluorescent analysis of (4% PFA) fixed mouse liver tissue using CYP3A4 antibody (67110-1-Ig, Clone: 2F11C4) at dilution of 1:400 and CoraLite®488-Conjugated AffiniPure Goat Anti-Mouse IgG(H+L). This data was developed using the same antibody clone with 67110-1-PBS in a different storage buffer formulation.



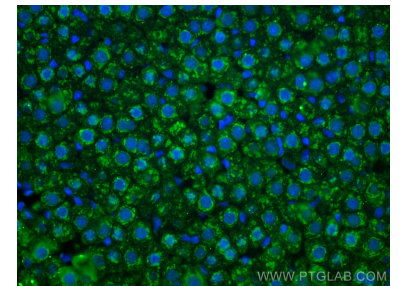
mouse liver tissue were subjected to SDS PAGE followed by western blot with 67110-1-Ig (CYP3A4 antibody) at dilution of 1:20000 incubated at room temperature for 1.5 hours. This data was developed using the same antibody clone with 67110-1-PBS in a different storage buffer formulation.



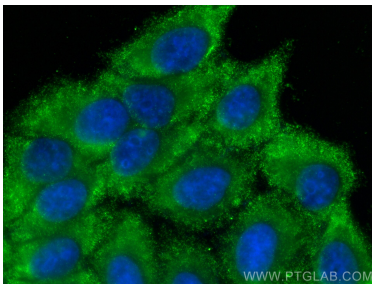
Immunohistochemical analysis of paraffin-embedded mouse liver tissue slide using 67110-1-Ig (CYP3A4 antibody) at dilution of 1:600 (under 10x lens). Heat mediated antigen retrieval with Tris-EDTA buffer (pH 9.0). This data was developed using the same antibody clone with 67110-1-PBS in a different storage buffer formulation.



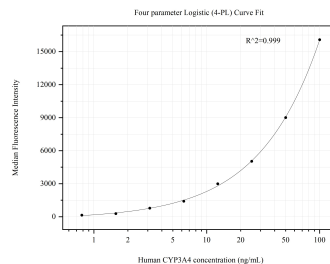
Immunohistochemical analysis of paraffin-embedded mouse liver tissue slide using 67110-1-Ig (CYP3A4 antibody) at dilution of 1:600 (under 40x lens). Heat mediated antigen retrieval with Tris-EDTA buffer (pH 9.0). This data was developed using the same antibody clone with 67110-1-PBS in a different storage buffer formulation.



Immunofluorescent analysis of (4% PFA) fixed rat liver tissue using CYP3A4 antibody (67110-1-Ig, Clone: 2F11C4) at dilution of 1:1000 and CoraLite®488-Conjugated AffiniPure Goat Anti-Mouse IgG(H+L). This data was developed using the same antibody clone with 67110-1-PBS in a different storage buffer formulation.



Immunofluorescent analysis of (-20°C Ethanol) fixed HepG2 cells using CYP3A4 antibody (67110-1-Ig, Clone: 2F11C4) at dilution of 1:800 and CoraLite®488-Conjugated Goat Anti-Mouse IgG(H+L) (SA00013-1). This data was developed using the same antibody clone with 67110-1-PBS in a different storage buffer formulation.



Cytometric bead array standard curve of MP50718-4, CYP3A4 Monoclonal Matched Antibody Pair, PBS Only. Capture antibody: 67110-6-PBS. Detection antibody: 67110-1-PBS. Standard: Ag13074. Range: 0.781-100 ng/mL.