

For Research Use Only

CNBP Monoclonal antibody, PBS Only



Catalog Number: 67109-1-PBS

Featured Product

Basic Information

Catalog Number:

67109-1-PBS

Size:

100ug, Concentration: 1 mg/ml by Nanodrop;

Source:

Mouse

Isotype:

IgG2a

Immunogen Catalog Number:

AG7114

GenBank Accession Number:

BC000288

GeneID (NCBI):

7555

UNIPROT ID:

P62633

Full Name:

CCHC-type zinc finger, nucleic acid binding protein

Calculated MW:

19 kDa

Observed MW:

19-25 kDa

Purification Method:

Protein A purification

CloneNo.:

1H1D12

Applications

Tested Applications:

WB, IP, Indirect ELISA

Species Specificity:

Human, mouse, rat

Storage

Storage:

Store at -80°C.

Storage Buffer:

PBS Only

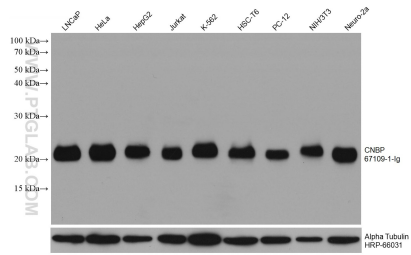
For technical support and original validation data for this product please contact:

T: 1 (888) 4PTGLAB (1-888-478-4522) (toll free in USA), or 1(312) 455-8498 (outside USA)

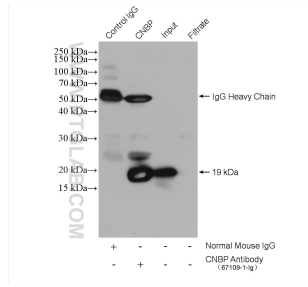
E: proteintech@ptglab.com
W: ptglab.com

This product is exclusively available under Proteintech Group brand and is not available to purchase from any other manufacturer.

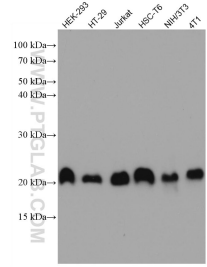
Selected Validation Data



Various lysates were subjected to SDS PAGE followed by western blot with 67109-1-Ig (CNBP antibody) at dilution of 1:20000 incubated at room temperature for 1.5 hours. The membrane was stripped and reblotted with HRP-conjugated Alpha Tubulin Monoclonal antibody (HRP-66031) as loading control. This data was developed using the same antibody clone with 67109-1-PBS in a different storage buffer formulation.



IP result of anti-CNBP (IP:67109-1-Ig, 5ug; Detection:67109-1-Ig 1:500) with HeLa cells lysate 1600 ug. This data was developed using the same antibody clone with 67109-1-PBS in a different storage buffer formulation.



Various lysates were subjected to SDS PAGE followed by western blot with 67109-1-Ig (CNBP antibody) at dilution of 1:10000 incubated at room temperature for 1.5 hours. This data was developed using the same antibody clone with 67109-1-PBS in a different storage buffer formulation.