

For Research Use Only

Calpastatin Monoclonal antibody, PBS Only (Capture)

Catalog Number: 67107-1-PBS



Basic Information

Catalog Number: 67107-1-PBS	GenBank Accession Number: BC013579	Purification Method: Protein G purification
Size: 100ug , Concentration: 1mg/ml by Nanodrop;	GeneID (NCBI): 831	CloneNo.: 1G12A2
Source: Mouse	UNIPROT ID: P20810	
Isotype: IgG1	Full Name: calpastatin	
Immunogen Catalog Number: AG28669	Calculated MW: 667 aa, 72 kDa	
	Observed MW: 115 kDa	

Applications

Tested Applications:
WB, IF/ICC, FC (Intra), Cytometric bead array, Indirect ELISA

Species Specificity:
human

Product Information

67107-1-PBS targets Calpastatin as part of a matched antibody pair:

MP50744-2: 67107-1-PBS capture and 67107-3-PBS detection (validated in Cytometric bead array)

MP50744-3: 67107-1-PBS capture and 67107-4-PBS detection (validated in Cytometric bead array)

Unconjugated mouse monoclonal antibody pair in PBS only (BSA and azide free) storage buffer at a concentration of 1 mg/mL, ready for conjugation.

This conjugation ready format makes antibodies ideal for use in many applications including: ELISAs, multiplex assays requiring matched pairs, mass cytometry, and multiplex imaging applications. Antibody use should be optimized by the end user for each application and assay.

Storage

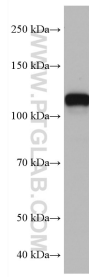
Storage:
Store at -80°C.

Storage Buffer:
PBS Only

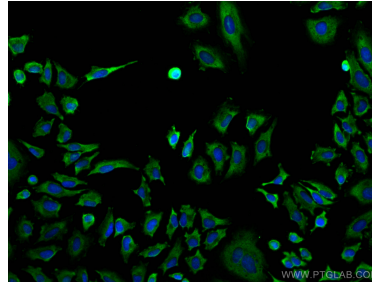
For technical support and original validation data for this product please contact:
T: 1 (888) 4PTGLAB (1-888-478-4522) (toll free in USA), or 1(312) 455-8498 (outside USA) E: proteintech@ptglab.com
W: ptglab.com

This product is exclusively available under Proteintech Group brand and is not available to purchase from any other manufacturer.

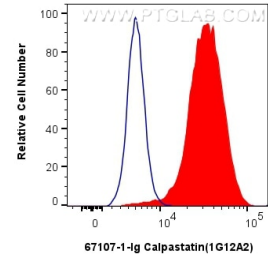
Selected Validation Data



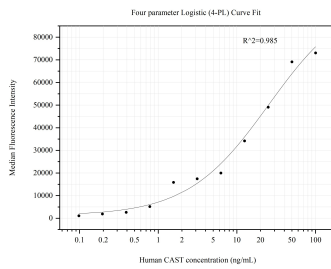
HeLa cells were subjected to SDS PAGE followed by western blot with 67107-1-Ig (CAST antibody) at dilution of 1:4000 incubated at room temperature for 1.5 hours. This data was developed using the same antibody clone with 67107-1-PBS in a different storage buffer formulation.



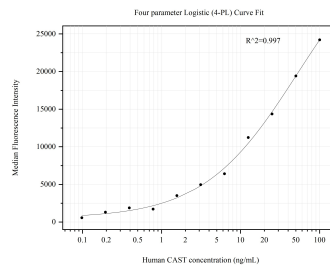
Immunofluorescent analysis of (-20°C Ethanol) fixed HeLa cells using Calpastatin antibody (67107-1-Ig, Clone: 1G12A2) at dilution of 1:400 and CoraLite@488-Conjugated AffiniPure Goat Anti-Mouse IgG(H+L). This data was developed using the same antibody clone with 67107-1-PBS in a different storage buffer formulation.



1x10⁶ HeLa cells were intracellularly stained with 0.8 ug Calpastatin Monoclonal antibody (67107-1-Ig, Clone:1G12A2) and CoraLite488-conjugated Donkey Anti-Mouse IgG(H+L)(SA00013-5)(red), or 0.8 ug Mouse IgG1 isotype control Mouse McAb (66360-1-Ig, Clone: 1F8D3) (blue). Cells were fixed with 4% PFA and permeabilized with Flow Cytometry Perm Buffer (PF00011-C). This data was developed using the same antibody clone with 67107-1-PBS in a different storage buffer



Cytometric bead array standard curve of MP50744-2, CAST Monoclonal Matched Antibody Pair, PBS Only. Capture antibody: 67107-1-PBS. Detection antibody: 67107-3-PBS. Standard:Ag28669. Range: 0.098-100 ng/mL



Cytometric bead array standard curve of MP50744-3, CAST Monoclonal Matched Antibody Pair, PBS Only. Capture antibody: 67107-1-PBS. Detection antibody: 67107-4-PBS. Standard:Ag28669. Range: 0.098-100 ng/mL