

For Research Use Only

PICK1 Monoclonal antibody, PBS Only



Catalog Number: 67099-1-PBS

Basic Information

Catalog Number: 67099-1-PBS	GenBank Accession Number: BC017561	Purification Method: Protein A purification
Size: 100ug , Concentration: 1 mg/ml by Nanodrop;	GeneID (NCBI): 9463	CloneNo.: 2E11A4
Source: Mouse	UNIPROT ID: Q9NRD5	
Isotype: IgG2a	Full Name: protein interacting with PRKCA 1	
Immunogen Catalog Number: AG28609	Calculated MW: 47 kDa	
	Observed MW: 50 kDa	

Applications

Tested Applications:
WB, Indirect ELISA

Species Specificity:
Human, Mouse, Rat, Pig

Background Information

Protein interacting with C kinase 1 (PICK1) was first cloned as a PKC-binding partner through yeast two hybrid system. PICK1 acts as a critical regulator of membrane receptors' subcellular trafficking to modulate neural processes such as learning and memory, and is widely expressed in brain, testis, heart, lung, liver, kidney and muscle. It probably binds to and organize the subcellular localization of a variety of membrane proteins containing some PDZ recognition sequence, for instance, PICK1 is a critical mediator of α -amino-3-hydroxy-5-methyl-4-isoxazolepropionic acid receptor (AMPA) trafficking in neural synapses. PICK1 expression on D-serine release and glutamate transport in astrocytes suggests a potential implication of PICK1 in the progression of amyotrophic lateral sclerosis (ALS). PICK1 may also participate in breast cancer development through inhibition of TGF- β signaling.

Storage

Storage:
Store at -80°C.

Storage Buffer:
PBS Only

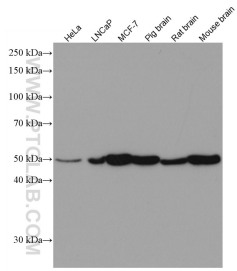
For technical support and original validation data for this product please contact:

T: 1 (888) 4PTGLAB (1-888-478-4522) (toll free in USA), or 1(312) 455-8498 (outside USA)

E: proteintech@ptglab.com
W: ptglab.com

This product is exclusively available under Proteintech Group brand and is not available to purchase from any other manufacturer.

Selected Validation Data



Various lysates were subjected to SDS PAGE followed by western blot with 67099-1-Ig (PICK1 antibody) at dilution of 1:3000 incubated at room temperature for 1.5 hours. This data was developed using the same antibody clone with 67099-1-PBS in a different storage buffer formulation.