

For Research Use Only

ELAVL2 Monoclonal antibody, PBS Only (Capture)

Catalog Number: 67097-1-PBS



Basic Information

Catalog Number: 67097-1-PBS	GenBank Accession Number: BC030692	Purification Method: Protein G purification
Size: 100ug, Concentration: 1mg/ml by Nanodrop;	GeneID (NCBI): 1993	CloneNo.: 2D8C10
Source: Mouse	UNIPROT ID: Q12926	
Isotype: IgG1	Full Name: ELAV (embryonic lethal, abnormal vision, Drosophila)-like 2 (Hu antigen B)	
Immunogen Catalog Number: AG28310	Calculated MW: 39 kDa	
	Observed MW: 35-40 kDa	

Applications

Tested Applications:
WB, Cytometric bead array, Indirect ELISA

Species Specificity:
human, mouse, rat, pig, rabbit

Product Information

67097-1-PBS targets ELAVL2 as part of a matched antibody pair:

MP50972-1: 67097-1-PBS capture and 67097-2-PBS detection (validated in Cytometric bead array)

Unconjugated mouse monoclonal antibody pair in PBS only (BSA and azide free) storage buffer at a concentration of 1 mg/mL, ready for conjugation.

This conjugation ready format makes antibodies ideal for use in many applications including: ELISAs, multiplex assays requiring matched pairs, mass cytometry, and multiplex imaging applications. Antibody use should be optimized by the end user for each application and assay.

Background Information

The ELAV (embryonic lethal abnormal visual system) gene of D. Melanogaste is the the first identified member of a family of neuronal RNA binding proteins that is conserved in metazoans. The proteins in this family contain three RNA Recognition Motifs (RRM), with a hinge region separating the second and third RRM and an optional non-conserved N-terminal region. The hinge includes signals essential for nuclear export and subcellular localization [PMID:9874760]. Elav is expressed specifically in the neurons and is required for the correct development and maintenance of the nervous system. ELAVL2 can binds RNA, and recognize a GAAA motif. In addition, it can bind to its own 3'-UTR, the FOS 3'-UTR and the ID 3'-UTR [PMID:18715504,21695151].

Storage

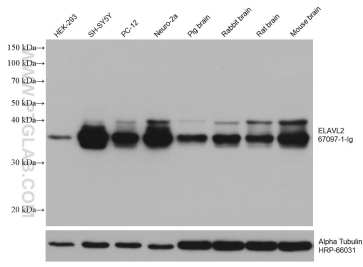
Storage:
Store at -80°C.

Storage Buffer:
PBS Only

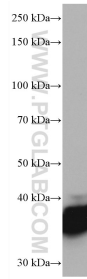
For technical support and original validation data for this product please contact:
T: 1 (888) 4PTGLAB (1-888-478-4522) (toll free in USA), or 1(312) 455-8498 (outside USA) E: proteintech@ptglab.com
W: ptglab.com

This product is exclusively available under Proteintech Group brand and is not available to purchase from any other manufacturer.

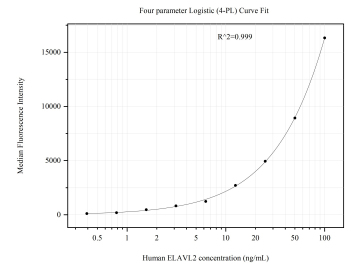
Selected Validation Data



Various lysates were subjected to SDS PAGE followed by western blot with 67097-1-Ig (ELAVL2 antibody) at dilution of 1:10000 incubated at room temperature for 1.5 hours. The membrane was stripped and reblotted with HRP-conjugated Alpha Tubulin Monoclonal antibody (HRP-66031) as loading control. This data was developed using the same antibody clone with 67097-1-PBS in a different storage buffer formulation.



Neuro-2a cells were subjected to SDS PAGE followed by western blot with 67097-1-Ig (ELAVL2 antibody) at dilution of 1:10000 incubated at room temperature for 1.5 hours. This data was developed using the same antibody clone with 67097-1-PBS in a different storage buffer formulation.



Cytometric bead array standard curve of MP50972-1, ELAVL2 Monoclonal Matched Antibody Pair, PBS Only. Capture antibody: 67097-1-PBS. Detection antibody: 67097-2-PBS. Standard: Ag28310. Range: 0.391-100 ng/mL