

For Research Use Only

SDC2 Monoclonal antibody, PBS Only



Catalog Number: 67088-1-PBS

Basic Information

Catalog Number: 67088-1-PBS	GenBank Accession Number: BC049836	Purification Method: Protein A purification
Size: 100ug , Concentration: 1 mg/ml by Nanodrop;	GeneID (NCBI): 6383	CloneNo.: 3A7B2
Source: Mouse	UNIPROT ID: P34741	
Isotype: IgG2a	Full Name: syndecan 2	
Immunogen Catalog Number: AG5739	Calculated MW: 22 kDa	
	Observed MW: 19 kDa, 22 and 48 kDa	

Applications

Tested Applications:
WB, IHC, Indirect ELISA

Species Specificity:
Human

Background Information

SDC2, containing cell surface heparan sulphate proteoglycan, functions as an integral membrane protein and participates in cell proliferation, cell migration, cell adhesion and signal transduction. It has been reported that the expression level of SDC2 will be up-regulated under hypoxia condition which can induce increased release of cytokines and chemokines. Besides, methylated SDC2 can be used as a potential biomarker for early diagnosis of colon cancer. 67088-1-Ig antibody detects the 19 and 22 kDa SDC2 isoforms as well as the 48 kDa dimeric protein in SDS-PAGE. (PMID: 18803305, 23297089, 30022330, 29945573)

Storage

Storage:
Store at -80°C.

Storage Buffer:
PBS Only

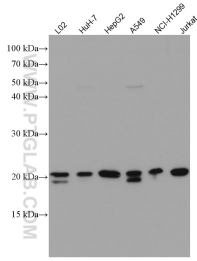
For technical support and original validation data for this product please contact:

T: 1 (888) 4PTGLAB (1-888-478-4522) (toll free in USA), or 1(312) 455-8498 (outside USA)

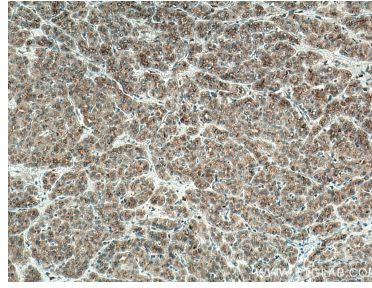
E: proteintech@ptglab.com
W: ptglab.com

This product is exclusively available under Proteintech Group brand and is not available to purchase from any other manufacturer.

Selected Validation Data



Various lysates were subjected to SDS PAGE followed by western blot with 67088-1-Ig (SDC2 antibody) at dilution of 1:5000 incubated at room temperature for 1.5 hours. This data was developed using the same antibody clone with 67088-1-PBS in a different storage buffer formulation.



Immunohistochemical analysis of paraffin-embedded human liver cancer tissue slide using 67088-1-Ig (SDC2 antibody) at dilution of 1:500 (under 10x lens. Heat mediated antigen retrieval with Tris-EDTA buffer (pH 9.0). This data was developed using the same antibody clone with 67088-1-PBS in a different storage buffer formulation.