

For Research Use Only

# ASK1 Monoclonal antibody, PBS Only



Catalog Number: 67072-1-PBS

## Basic Information

<b>Catalog Number:</b> 67072-1-PBS	<b>GenBank Accession Number:</b> BC054503	<b>Purification Method:</b> Protein G purification
<b>Size:</b> 100ug, Concentration: 1 mg/ml by Nanodrop;	<b>GeneID (NCBI):</b> 4217	<b>CloneNo.:</b> 1C3A10
<b>Source:</b> Mouse	<b>UNIPROT ID:</b> Q99683	
<b>Isotype:</b> IgG1	<b>Full Name:</b> mitogen-activated protein kinase kinase kinase 5	
<b>Immunogen Catalog Number:</b> AG5818	<b>Calculated MW:</b> 155 kDa	
	<b>Observed MW:</b> 110 kDa	

## Applications

**Tested Applications:**  
WB, IF, IHC, Indirect ELISA

**Species Specificity:**  
Human, Mouse, Rat

## Background Information

ASK1 (Apoptosis signal-regulating kinase 1) is also named as MAP3K5, MAPKKK5, MEK5 and belongs to the MAP kinase kinase kinase subfamily. It is an evolutionarily conserved mitogen activated protein 3-kinase that activates both Jnk and p38 mitogen-activated protein kinases. ASK1 is activated in response to various cytotoxic stresses including TNF, Fas and reactive oxygen species (ROS) such as H<sub>2</sub>O<sub>2</sub>, and activates c-Jun NH 2-terminal kinase (JNK) and p38. 67072-1-Ig antibody detects the degraded product of ASK1 in SDS-PAGE.

## Storage

**Storage:**  
Store at -80°C.

**Storage Buffer:**  
PBS Only

For technical support and original validation data for this product please contact:

T: 1 (888) 4PTGLAB (1-888-478-4522) (toll free in USA), or 1(312) 455-8498 (outside USA)

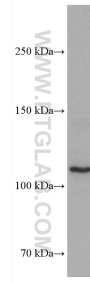
E: [proteintech@ptglab.com](mailto:proteintech@ptglab.com)  
W: [ptglab.com](http://ptglab.com)

**This product is exclusively available under Proteintech Group brand and is not available to purchase from any other manufacturer.**

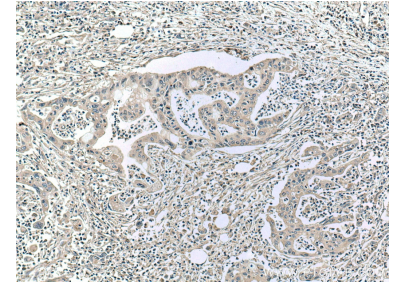
## Selected Validation Data



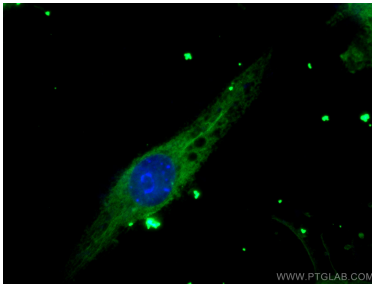
HEK-293 cells were subjected to SDS PAGE followed by western blot with 67072-1-Ig (ASK1 antibody) at dilution of 1:3000 incubated at room temperature for 1.5 hours. This data was developed using the same antibody clone with 67072-1-PBS in a different storage buffer formulation.



HSC-T6 cells were subjected to SDS PAGE followed by western blot with 67072-1-Ig (ASK1 antibody) at dilution of 1:3000 incubated at room temperature for 1.5 hours. This data was developed using the same antibody clone with 67072-1-PBS in a different storage buffer formulation.



Immunohistochemical analysis of paraffin-embedded human pancreas cancer tissue slide using 67072-1-Ig (ASK1 antibody) at dilution of 1:300 (under 10x lens. Heat mediated antigen retrieval with Tris-EDTA buffer (pH 9.0)). This data was developed using the same antibody clone with 67072-1-PBS in a different storage buffer formulation.



Immunofluorescent analysis of (-20°C Ethanol) fixed RAW 264.7 cells using ASK1 antibody (67072-1-Ig, Clone: 1C3A10) at dilution of 1:200 and CoraLite®488-Conjugated AffiniPure Goat Anti-Mouse IgG(H+L). This data was developed using the same antibody clone with 67072-1-PBS in a different storage buffer formulation.