

For Research Use Only

C1QA Monoclonal antibody, PBS Only

Catalog Number: 67063-1-PBS



Basic Information

Catalog Number: 67063-1-PBS	GenBank Accession Number: BC030153	Purification Method: Protein G purification
Size: 100ug , Concentration: 1000 µg/ml by 712 Nanodrop;	GeneID (NCBI): UNIPROT ID: P02745	CloneNo.: 1B10E3
Source: Mouse	Full Name: complement component 1, q subcomponent, A chain	
Isotype: IgG1	Calculated MW: 245 aa, 26 kDa	
Immunogen Catalog Number: AG28622	Observed MW: 30 kDa	

Applications

Tested Applications:
WB, IHC, IF/ICC, Indirect ELISA

Species Specificity:
human

Background Information

The first component of complement, C1, is a calcium-dependent complex of the 3 subcomponents C1q, C1r, and C1s. C1q is composed of 18 polypeptide chains: six A-chains, six B-chains, and six C-chains. Each chain contains a collagen-like region located near the N terminus and a C-terminal globular region. Deficiency of C1q has been associated with lupus erythematosus and glomerulonephritis. This antibody is raised against C1qA which is the A-chain polypeptide of human complement subcomponent C1q.

Storage

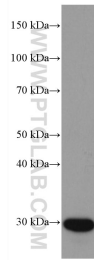
Storage:
Store at -80°C.

Storage Buffer:
PBS Only

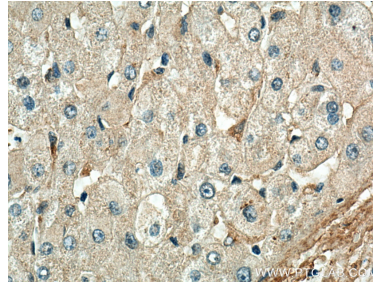
For technical support and original validation data for this product please contact:
T: 1 (888) 4PTGLAB (1-888-478-4522) (toll free in USA), or 1(312) 455-8498 (outside USA) E: proteintech@ptglab.com
W: ptglab.com

This product is exclusively available under Proteintech Group brand and is not available to purchase from any other manufacturer.

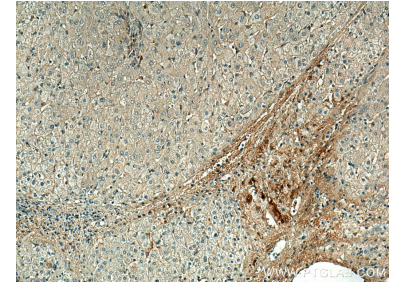
Selected Validation Data



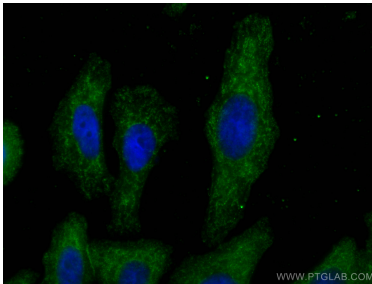
human plasma were subjected to SDS PAGE followed by western blot with 67063-1-Ig (C1QA antibody) at dilution of 1:10000 incubated at room temperature for 1.5 hours. This data was developed using the same antibody clone with 67063-1-PBS in a different storage buffer formulation.



Immunohistochemical analysis of paraffin-embedded human liver tissue slide using 67063-1-Ig (C1QA antibody) at dilution of 1:1000 (under 40x lens). Heat mediated antigen retrieval with Tris-EDTA buffer (pH 9.0). This data was developed using the same antibody clone with 67063-1-PBS in a different storage buffer formulation.



Immunohistochemical analysis of paraffin-embedded human liver tissue slide using 67063-1-Ig (C1QA antibody) at dilution of 1:1000 (under 10x lens). Heat mediated antigen retrieval with Tris-EDTA buffer (pH 9.0). This data was developed using the same antibody clone with 67063-1-PBS in a different storage buffer formulation.



Immunofluorescent analysis of (-20°C Ethanol) fixed HepG2 cells using C1QA antibody (67063-1-Ig, Clone: 1B10E3) at dilution of 1:400 and CoraLite®488-Conjugated Goat Anti-Mouse IgG(H+L). This data was developed using the same antibody clone with 67063-1-PBS in a different storage buffer formulation.