

For Research Use Only

NEU1 Monoclonal antibody, PBS Only

Catalog Number: 67032-1-PBS



Basic Information

Catalog Number: 67032-1-PBS	GenBank Accession Number: BC011900	Purification Method: Protein A purification
Size: 100ug, Concentration: 1mg/ml by Nanodrop;	GeneID (NCBI): 4758	CloneNo.: 1F6D1
Source: Mouse	UNIPROT ID: Q99519	
Isotype: IgG1	Full Name: sialidase 1 (lysosomal sialidase)	
Immunogen Catalog Number: AG27945	Calculated MW: 45 kDa	
	Observed MW: 45-48 kDa	

Applications

Tested Applications:
WB, IHC, IF/ICC, Indirect ELISA

Species Specificity:
human, mouse, rat, pig

Background Information

NEU1 (lysosomal sialidase) encodes a kind of lysosomal enzyme that could cleave terminal sialic acids from glycoproteins or glycolipids to regulate various biological processes by conformational change (PMID:28130415). In the lysosome, NEU1 is one member of a heterotrimeric complex, the others are beta-galactosidase and cathepsin A. The NEU1 is widely expressed in mammalian tissues and involved in lysosomal storage disorder sialidosis, autoimmune diseases and the malignancy and metastasis of cancer cells (PMID:19075514). NEU1 also expresses on the plasma membrane where it modulates several signalling molecules about inflammation, exocytosis, phagocytosis, cell adhesion and proliferation (PMID:21928149). Addition, it is reported that mutation in NEU1 of human could lead to sialidosis (PMID:14517945).

Storage

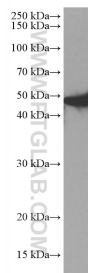
Storage:
Store at -80°C.

Storage Buffer:
PBS Only

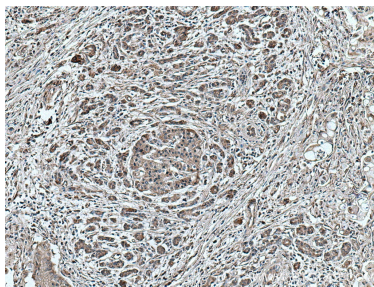
For technical support and original validation data for this product please contact:
T: 1 (888) 4PTGLAB (1-888-478-4522) (toll free in USA), or 1(312) 455-8498 (outside USA) E: proteintech@ptglab.com
W: ptglab.com

This product is exclusively available under Proteintech Group brand and is not available to purchase from any other manufacturer.

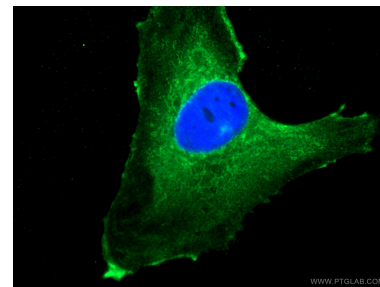
Selected Validation Data



PC-12 cells were subjected to SDS PAGE followed by western blot with 67032-1-Ig (NEU1 antibody) at dilution of 1:3000 incubated at room temperature for 1.5 hours. This data was developed using the same antibody clone with 67032-1-PBS in a different storage buffer formulation.



Immunohistochemical analysis of paraffin-embedded human pancreas cancer tissue slide using 67032-1-Ig (NEU1 antibody) at dilution of 1:300 (under 10x lens. Heat mediated antigen retrieval with Tris-EDTA buffer (pH 9.0). This data was developed using the same antibody clone with 67032-1-PBS in a different storage buffer formulation.



Immunofluorescent analysis of (-20°C Ethanol) fixed U-251 cells using 67032-1-Ig (NEU1 antibody), at dilution of 1:200 and CoraLite® 488-Conjugated AffiniPure Goat Anti-Mouse IgG(H+L). This data was developed using the same antibody clone with 67032-1-PBS in a different storage buffer formulation.