

For Research Use Only

# Ribosomal protein L4 Monoclonal antibody, PBS Only



Catalog Number: 67028-1-PBS

## Basic Information

<b>Catalog Number:</b> 67028-1-PBS	<b>GenBank Accession Number:</b> BC009888	<b>Purification Method:</b> Protein A purification
<b>Size:</b> 100ug , Concentration: 1mg/ml by Nanodrop;	<b>GeneID (NCBI):</b> 6124	<b>CloneNo.:</b> 3C7A8
<b>Source:</b> Mouse	<b>UNIPROT ID:</b> P36578	
<b>Isotype:</b> IgG1	<b>Full Name:</b> ribosomal protein L4	
<b>Immunogen Catalog Number:</b> AG28728	<b>Calculated MW:</b> 48 kDa	
	<b>Observed MW:</b> 48 kDa	

## Applications

**Tested Applications:**  
Indirect ELISA, IF/ICC, IHC, WB

**Species Specificity:**  
rat, mouse, human

## Background Information

60S ribosomal protein L4 is encoded by RPL4 (or RPL1) gene. RPL4 is a component of 60S subunit of ribosome, and belongs to the L4E family. By interacting with c-Myb, RPL4 plays a important role in c-myc expression in response to growth factor and nutritional signals. Recently RPL4 was reported to be able to increase efficiency of viral recoding sequence.

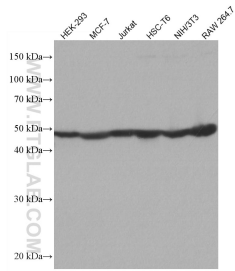
## Storage

**Storage:**  
Store at -80°C.  
**Storage Buffer:**  
PBS Only

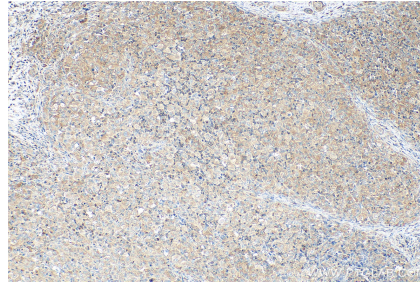
For technical support and original validation data for this product please contact:  
T: 1 (888) 4PTGLAB (1-888-478-4522) (toll free in USA), or 1(312) 455-8498 (outside USA)      E: proteintech@ptglab.com  
W: ptglab.com

This product is exclusively available under Proteintech Group brand and is not available to purchase from any other manufacturer.

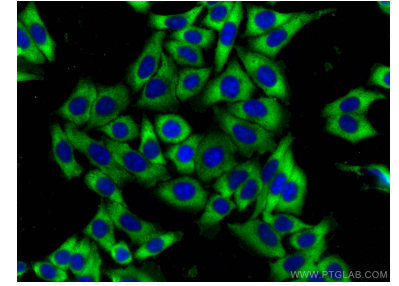
## Selected Validation Data



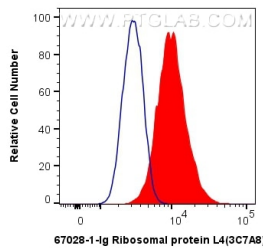
Various lysates were subjected to SDS PAGE followed by western blot with 67028-1-Ig (Ribosomal protein L4 antibody) at dilution of 1:10000 incubated at room temperature for 1.5 hours. This data was developed using the same antibody clone with 67028-1-PBS in a different storage buffer formulation.



Immunohistochemical analysis of paraffin-embedded human lymphoma tissue slide using 67028-1-Ig (Ribosomal protein L4 antibody) at dilution of 1:2000 (under 10x lens). Heat mediated antigen retrieval with Tris-EDTA buffer (pH 9.0). This data was developed using the same antibody clone with 67028-1-PBS in a different storage buffer formulation.



Immunofluorescent analysis of (-20°C Ethanol) fixed HepG2 cells using Ribosomal protein L4 antibody (67028-1-Ig, Clone: 3C7A8) at dilution of 1:400 and CoraLite®488-Conjugated AffiniPure Goat Anti-Mouse IgG(H+L). This data was developed using the same antibody clone with 67028-1-PBS in a different storage buffer formulation.



1X10<sup>6</sup> HepG2 cells were intracellularly stained with 0.4 ug Anti-Human Ribosomal protein L4 (67028-1-Ig, Clone:3C7A8) and CoraLite®488-Conjugated AffiniPure Goat Anti-Mouse IgG(H+L) at dilution 1:1000 (red), or 0.4 ug Mouse IgG1 Isotype Control (MOPC-21) (65124-1-Ig, Clone: MOPC-21) (blue). Cells were fixed with 4% PFA and permeabilized with Flow Cytometry Perm Buffer (PF00011-C). This data was developed using the same antibody clone with 67028-1-PBS in a

