

For Research Use Only

# TAB1 Monoclonal antibody, PBS Only

Catalog Number: 67020-1-PBS



## Basic Information

<b>Catalog Number:</b> 67020-1-PBS	<b>GenBank Accession Number:</b> BC050554	<b>Purification Method:</b> Protein A purification
<b>Size:</b> 100ug , Concentration: 1 mg/ml by Nanodrop;	<b>GeneID (NCBI):</b> 10454	<b>CloneNo.:</b> 1E10D12
<b>Source:</b> Mouse	<b>UNIPROT ID:</b> Q15750	
<b>Isotype:</b> IgG1	<b>Full Name:</b> mitogen-activated protein kinase kinase kinase 7 interacting protein 1	
<b>Immunogen Catalog Number:</b> AG6590	<b>Calculated MW:</b> 55 kDa	
	<b>Observed MW:</b> 55 kDa	

## Applications

**Tested Applications:**  
WB, IF, IHC, ELISA

**Species Specificity:**  
Human, mouse, rat

## Storage

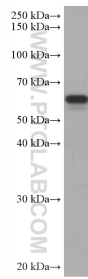
**Storage:**  
Store at -80°C.

**Storage Buffer:**  
PBS only

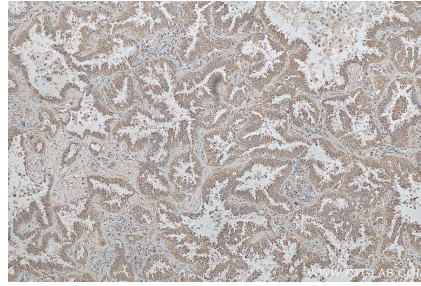
For technical support and original validation data for this product please contact:  
T: 1 (888) 4PTGLAB (1-888-478-4522) (toll free in USA), or 1(312) 455-8498 (outside USA)      E: proteintech@ptglab.com  
W: ptglab.com

This product is exclusively available under Proteintech Group brand and is not available to purchase from any other manufacturer.

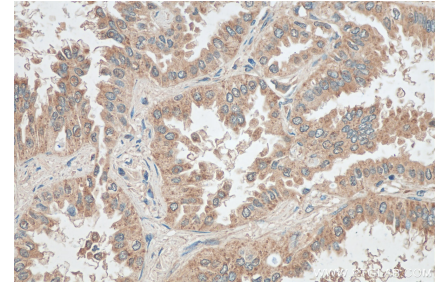
## Selected Validation Data



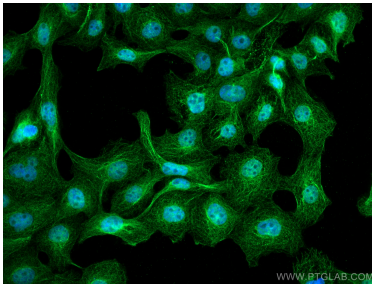
HEK-293 cells were subjected to SDS PAGE followed by western blot with 67020-1-Ig (TAB1 antibody) at dilution of 1:10000 incubated at room temperature for 1.5 hours. This data was developed using the same antibody clone with 67020-1-PBS in a different storage buffer formulation.



Immunohistochemical analysis of paraffin-embedded human lung cancer tissue slide using 67020-1-Ig (TAB1 antibody) at dilution of 1:400 (under 10x lens). Heat mediated antigen retrieval with Tris-EDTA buffer (pH 9.0). This data was developed using the same antibody clone with 67020-1-PBS in a different storage buffer formulation.



Immunohistochemical analysis of paraffin-embedded human lung cancer tissue slide using 67020-1-Ig (TAB1 antibody) at dilution of 1:400 (under 40x lens). Heat mediated antigen retrieval with Tris-EDTA buffer (pH 9.0). This data was developed using the same antibody clone with 67020-1-PBS in a different storage buffer formulation.



Immunofluorescent analysis of (4% PFA) fixed A431 cells using TAB1 antibody (67020-1-Ig, Clone: 1E10D12 ) at dilution of 1:400 and Coralite®488-Conjugated AffiniPure Goat Anti-Mouse IgG(H+L). This data was developed using the same antibody clone with 67020-1-PBS in a different storage buffer formulation.