

For Research Use Only

NUP50 Monoclonal antibody, PBS Only



Catalog Number: 67001-1-PBS

Featured Product

Basic Information

Catalog Number:

67001-1-PBS

Size:

100ug, Concentration: 1 mg/ml by Nanodrop;

Source:

Mouse

Isotype:

IgG1

Immunogen Catalog Number:

AG15144

GenBank Accession Number:

BC028125

GeneID (NCBI):

10762

UNIPROT ID:

Q9UIK7

Full Name:

nucleoporin 50kDa

Calculated MW:

468 aa, 50 kDa

Observed MW:

50-55 kDa

Purification Method:

Protein A purification

CloneNo.:

1D5A7

Applications

Tested Applications:

WB, IHC, Indirect ELISA

Species Specificity:

Human, mouse

Background Information

Nup50 (also known as Npap60) is a nucleoporin that binds directly to importin α and their interaction plays an important role in nuclear import. Nup50 is a mobile nucleoporin localized primarily in the nuclear basket of the nuclear pore complex (NPC) and in the nucleoplasm. Human Nup50 has two isoforms: Npap60L (1-469 aa), and its alternatively spliced isoform, Npap60S (29-469 aa) of Npap60L.

Storage

Storage:

Store at -80°C .

Storage Buffer:

PBS Only

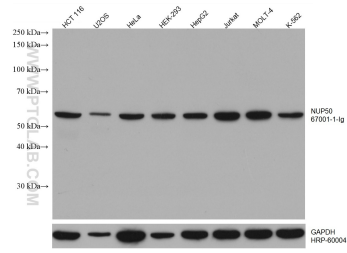
For technical support and original validation data for this product please contact:

T: 1 (888) 4PTGLAB (1-888-478-4522) (toll free in USA), or 1(312) 455-8498 (outside USA)

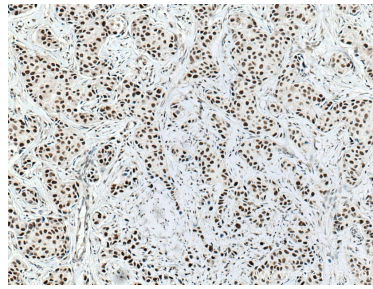
E: proteintech@ptglab.com
W: ptglab.com

This product is exclusively available under Proteintech Group brand and is not available to purchase from any other manufacturer.

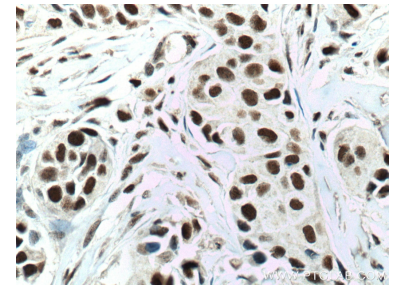
Selected Validation Data



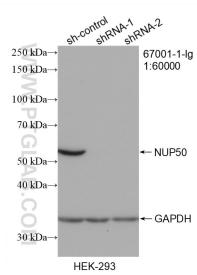
Various lysates were subjected to SDS PAGE followed by western blot with 67001-1-Ig (NUP50 antibody) at dilution of 1:20000 incubated at room temperature for 1.5 hours. The membrane was stripped and reblotted with HRP-conjugated GAPDH Monoclonal antibody (HRP-60004) as loading control. This data was developed using the same antibody clone with 67001-1-PBS in a different storage buffer formulation.



Immunohistochemical analysis of paraffin-embedded human breast cancer tissue slide using 67001-1-Ig (NUP50 antibody) at dilution of 1:1000 (under 10x lens. Heat mediated antigen retrieval with Tris-EDTA buffer (pH 9.0). This data was developed using the same antibody clone with 67001-1-PBS in a different storage buffer formulation.



Immunohistochemical analysis of paraffin-embedded human breast cancer tissue slide using 67001-1-Ig (NUP50 antibody) at dilution of 1:1000 (under 40x lens. Heat mediated antigen retrieval with Tris-EDTA buffer (pH 9.0). This data was developed using the same antibody clone with 67001-1-PBS in a different storage buffer formulation.



WB result of NUP50 antibody (67001-1-Ig; 1:60000; incubated at room temperature for 1.5 hours) with sh-Control and sh-NUP50 transfected HEK-293 cells. This data was developed using the same antibody clone with 67001-1-PBS in a different storage buffer formulation.