

For Research Use Only

CEP63 Monoclonal antibody, PBS Only



Catalog Number: 66996-1-PBS

Basic Information

Catalog Number: 66996-1-PBS	GenBank Accession Number: BC014050	Purification Method: Protein G purification
Size: 100ug , Concentration: 1 mg/ml by Nanodrop;	GeneID (NCBI): 80254	CloneNo.: 2G12B2
Source: Mouse	UNIPROT ID: Q96MT8	
Isotype: IgG1	Full Name: centrosomal protein 63kDa	
Immunogen Catalog Number: AG9227	Calculated MW: 703 aa, 81 kDa	
	Observed MW: 85 kDa	

Applications

Tested Applications:
WB, IF, Indirect ELISA

Species Specificity:
Human, Mouse, Rat

Background Information

CEP63 is required for normal spindle assembly. It maintains centrosome numbers through centrosomal recruitment of CEP152. CEP63 recruits CDK1 to centrosomes. It plays a role in DNA damage response.

Storage

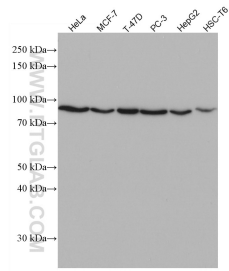
Storage:
Store at -80°C.

Storage Buffer:
PBS Only

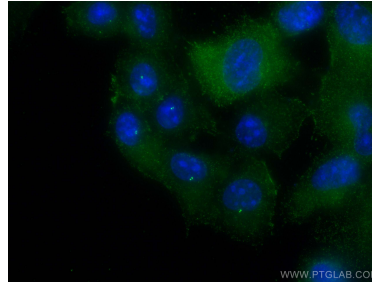
For technical support and original validation data for this product please contact:
T: 1 (888) 4PTGLAB (1-888-478-4522) (toll free in USA), or 1(312) 455-8498 (outside USA) E: proteintech@ptglab.com
W: ptglab.com

This product is exclusively available under Proteintech Group brand and is not available to purchase from any other manufacturer.

Selected Validation Data



Various lysates were subjected to SDS PAGE followed by western blot with 66996-1-Ig (CEP63 antibody) at dilution of 1:3000 incubated at room temperature for 1.5 hours. This data was developed using the same antibody clone with 66996-1-PBS in a different storage buffer formulation.



Immunofluorescent analysis of (-20°C Methanol) fixed hTERT-RPE1 cells using CEP63 antibody (66996-1-Ig, Clone: 2G12B2) at dilution of 1:2000 and CoraLite®488-Conjugated AffiniPure Goat Anti-Mouse IgG(H+L). This data was developed using the same antibody clone with 66996-1-PBS in a different storage buffer formulation.