

For Research Use Only

CTBP1 Monoclonal antibody, PBS Only



Catalog Number: 66995-1-PBS

Basic Information

| | | |
|------------------------------------------------------------|---------------------------------------------------|-------------------------------------------------------|
| Catalog Number: 66995-1-PBS | GenBank Accession Number: BC011655 | Purification Method: Protein A purification |
| Size: 100ug , Concentration: 1mg/ml by Nanodrop; | GeneID (NCBI): 1487 | CloneNo.: 1C4B2 |
| Source: Mouse | UNIPROT ID: Q13363 | |
| Isotype: IgG1 | Full Name: C-terminal binding protein 1 | |
| Immunogen Catalog Number: AG28567 | Calculated MW: 48 kDa | |
| | Observed MW: 45-48 kDa | |

Applications

Tested Applications:
Indirect ELISA, IF/ICC, IHC, WB

Species Specificity:
rat, mouse, human

Background Information

CTBP1, also named as C-terminal-binding protein 1, is a 440 amino acid protein, which belongs to the D-isomer specific 2-hydroxyacid dehydrogenase family. CTBP1 is a cellular phosphoprotein that associates with various proteins and functions as a corepressor of transcription. CTBP1 and the related protein CTBP2 are characterized as C-terminal binding protein of adenovirus E1A, and they preferentially associate with the E1A via a 5-amino acid motif, PLDLS, to repress E1A induced oncogenesis and cellular transformation. CTBP1 is expressed from embryo to adult, but CTBP2 is mainly expressed during embryogenesis.

Storage

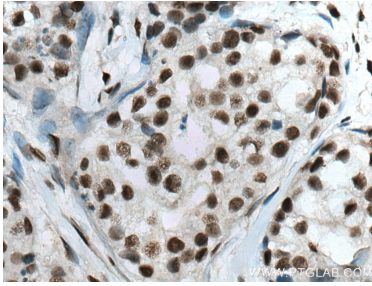
Storage:
Store at -80°C.

Storage Buffer:
PBS Only

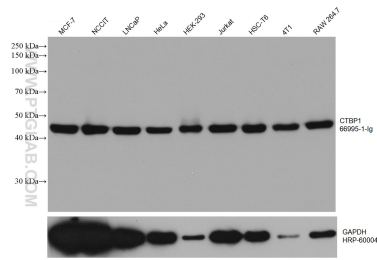
For technical support and original validation data for this product please contact:
T: 1 (888) 4PTGLAB (1-888-478-4522) (toll free in USA), or 1(312) 455-8498 (outside USA) E: proteintech@ptglab.com
W: ptglab.com

This product is exclusively available under Proteintech Group brand and is not available to purchase from any other manufacturer.

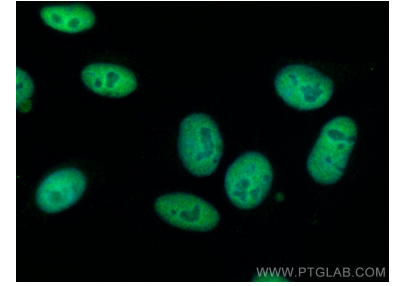
Selected Validation Data



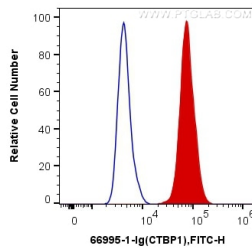
Immunohistochemical analysis of paraffin-embedded human breast cancer tissue slide using 66995-1-Ig (CTBP1 antibody) at dilution of 1:2000 (under 40x lens). Heat mediated antigen retrieval with Tris-EDTA buffer (pH 9.0). This data was developed using the same antibody clone with 66995-1-PBS in a different storage buffer formulation.



Various lysates were subjected to SDS PAGE followed by western blot with 66995-1-Ig (CTBP1 antibody) at dilution of 1:20000 incubated at room temperature for 1.5 hours. The membrane was stripped and reblotted with HRP-conjugated GAPDH Monoclonal antibody (HRP-60004) as loading control. This data was developed using the same antibody clone with 66995-1-PBS in a different storage buffer formulation.



Immunofluorescent analysis of (4% PFA) fixed HepG2 cells using CTBP1 antibody (66995-1-Ig, Clone: 1C4B2) at dilution of 1:4000 and CoraLite®488-Conjugated AffiniPure Goat Anti-Mouse IgG(H+L). This data was developed using the same antibody clone with 66995-1-PBS in a different storage buffer formulation.



1X10⁶ HepG2 cells were intracellularly stained with 0.2 ug Anti-Human CTBP1 (66995-1-Ig, Clone:1C4B2) and CoraLite®488-Conjugated AffiniPure Goat Anti-Mouse IgG(H+L) at dilution 1:1000 (red), or 0.2 ug Mouse IgG1 Isotype Control (66360-1-Ig, Clone: T1F8D3F10) (blue). Cells were fixed and permeabilized with Transcription Factor Staining Buffer Kit (PF00011). This data was developed using the same antibody clone with 66995-1-PBS in a different storage buffer formulation.