

For Research Use Only

SLC4A1 Monoclonal antibody, PBS Only (Detector)

Catalog Number: 66984-5-PBS



Basic Information

Catalog Number:

66984-5-PBS

Size:

100ug, Concentration: 1 mg/ml by Nanodrop;

Source:

Mouse

Isotype:

IgG1

Immunogen Catalog Number:

AG28058

GenBank Accession Number:

BC101570

GeneID (NCBI):

6521

UNIPROT ID:

P02730

Full Name:

solute carrier family 4, anion exchanger, member 1 (erythrocyte membrane protein band 3, Diego blood group)

Calculated MW:

911 aa, 102 kDa

Purification Method:

Protein G Magarose purification

CloneNo.:

5A7E8

Applications

Tested Applications:

Cytometric bead array, Indirect ELISA

Species Specificity:

human

Product Information

66984-5-PBS targets SLC4A1 as part of a matched antibody pair.

MP50547-2: 66984-4-PBS capture and 66984-5-PBS detection (validated in Cytometric bead array)

Unconjugated mouse monoclonal antibody pair in PBS only (BSA and azide free) storage buffer at a concentration of 1 mg/mL, ready for conjugation.

This conjugation ready format makes antibodies ideal for use in many applications including: ELISAs, multiplex assays requiring matched pairs, mass cytometry, and multiplex imaging applications. Antibody use should be optimized by the end user for each application and assay.

Storage

Storage:

Store at -80°C.

Storage Buffer:

PBS Only

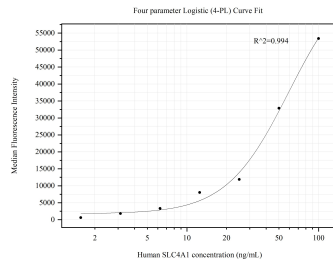
For technical support and original validation data for this product please contact:

T: 1 (888) 4PTGLAB (1-888-478-4522) (toll free in USA), or 1(312) 455-8498 (outside USA)

E: proteintech@ptglab.com
W: ptglab.com

This product is exclusively available under Proteintech Group brand and is not available to purchase from any other manufacturer.

Selected Validation Data



Cytometric bead array standard curve of MP50547-2, SLC4A1 Monoclonal Matched Antibody Pair, PBS Only. Capture antibody: 66984-4-PBS. Detection antibody: 66984-5-PBS. Standard: Ag28058. Range: 1.563-100 ng/mL.